

# Staff Senate Facilities Operations Department Update

13 April 2011



# Facilities Report

- Inventory – 76 Buildings
  - 34 Academic/Administrative Buildings
  - 27 Dormitories
  - 10 Campus Houses
  - 3 Homestead Properties
  - 2 Storage Buildings
  - Fitzpatrick Field
  - Southside Sports Complex
  - Springbrook Property
  - Roaring Brook Property
  - Grounds, Commons , Royal Way and Parking Lots,
- 1985 – 40 Buildings – 760,000 gsf. (approx.)
- 2011 – 70 Buildings – 1,900,000 gsf. (approx.)
- 1990 – 495 Capital and Plant Projects
  - \$265,000,000 budgeted for projects.
- 2000 – 140 FIP Projects
  - \$6,000,000 budgeted.

# Project Update

- Unified Science Center
- Mulberry Street Housing Complex
- Commons Extension
- Royal Way
- Clay Avenue Reconstruction
- Mulberry Street Improvement Project
- Dormitory Renovations and Upgrades.
- Athletics Feasibility Study
- Nevils Hall Renovations for Coaches Offices
- Martin Hall Feasibility and Use
- Exercise Science, OT, and PT Study
- Campus Police Headquarters Feasibility Study
- Facilities Maintenance Plan (FIP)
- Facilities Improvement Plan (FMP)
- Property Acquisitions and Demolitions

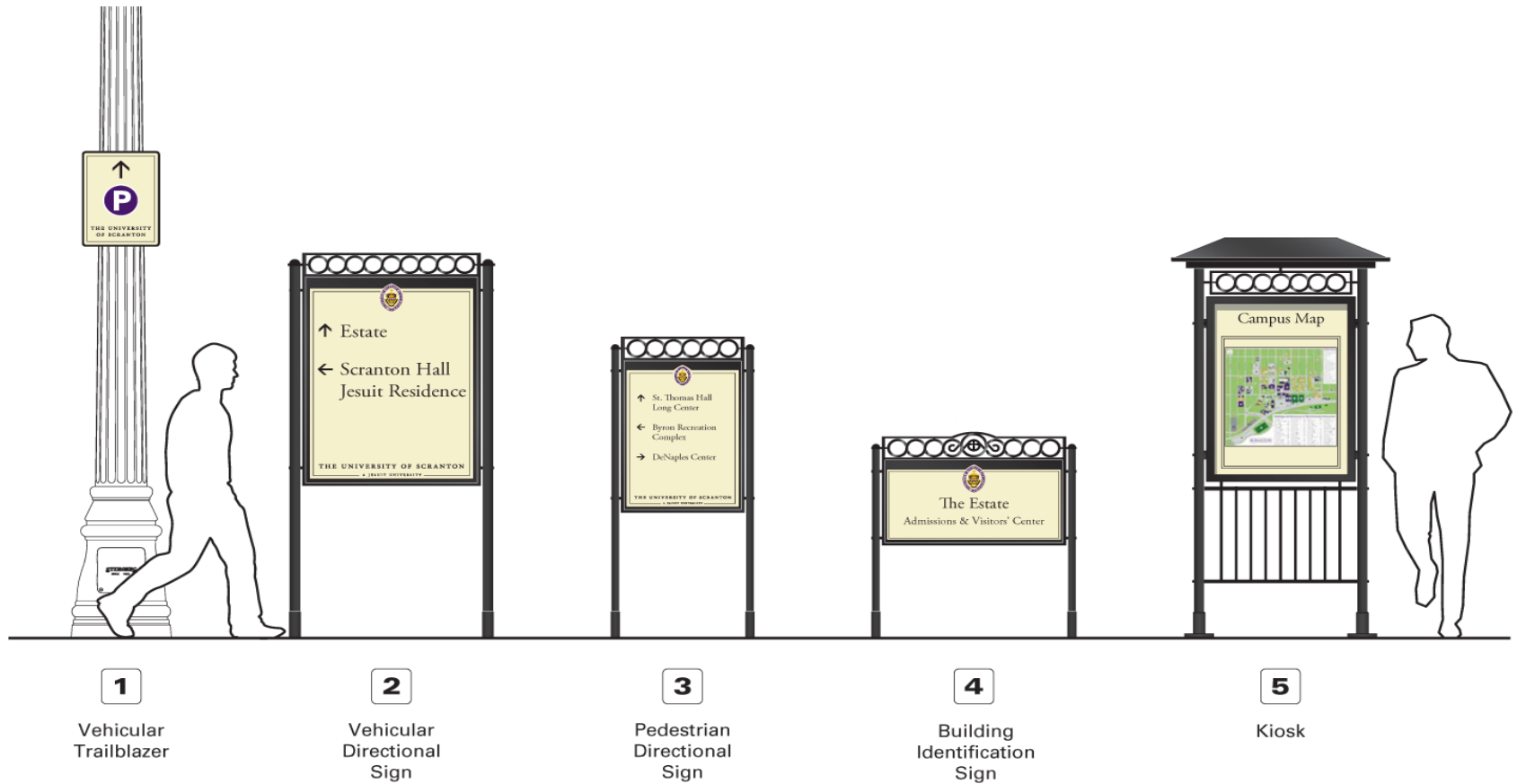
# Annual Dormitory Renovations and Upgrades

- 27 Dorms – 10 campus houses – 1,405 rooms.
  - Repairs and Painting – 3 additional painters.
- \$500,000 Allocated for Annual Upgrades in the Capital Plan
  - 2010 – Redington Hall
  - 2011 – Gavigan Hall
    - Interior Renovations
- Campus Houses
- Housing Plan
  - Fayette, Wayne, and Cambria Houses
  - Reduction

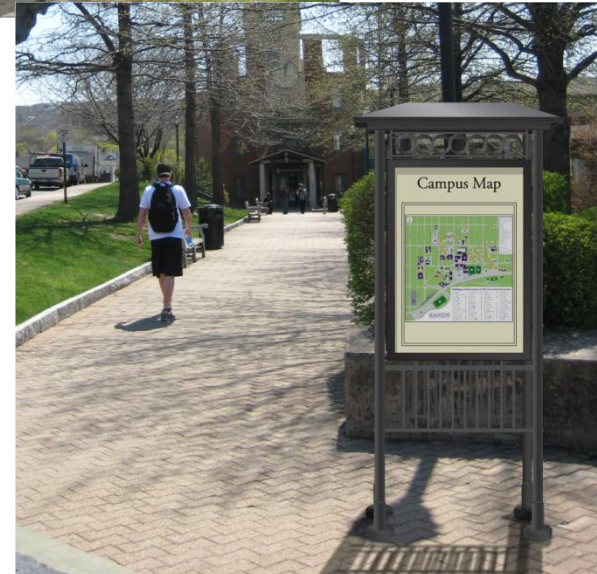
# Signage and Wayfinding Plan

- Ayers Saint Gross
- Wayfinding
  - Direct people to various destinations
  - Parking Pavilion to Admissions
  - Major Building Listing
- Signage
  - Building Signs
  - Kiosks and Map Tables
- Phase 1 Completed
- Phase 2 Commence in Summer 2011

# Signage and Wayfinding Plan



# Signage and Wayfinding Plan





# Infinity Ribbon for Signs and Rails





# Landscape Improvement Projects

- Ayers Saint Gross/BDA
  - Mulberry Street Improvement Project
    - City and Penn DOT Approvals
    - September - December
  - Commons Extension Project
    - Condrion & Gavigan Halls landscaping.
    - Commons from Clay to North Webster Ave.
    - Clay Avenue between Mulberry and Linden.
  - Royal Way
    - Gateway @ Mulberry to Catlin Court.
    - Fountain and Statue of St. Ignatius

# Mulberry Street Improvement Project

- Gateway Sign
  - Under Construction – Completion in early September.
- Phase One
  - Jefferson Ave to Madison Avenue
  - Project is 98% Complete
- Phase Two
  - Madison Ave. to Quincy Ave.
- Phase Three
  - Quincy Ave. to Webster Ave.
- RACP Grant - \$1,000,000

# Mulberry St. Improvement Project



Mulberry Street is the focal urban edge of the campus. To enhance this gateway, redevelopment of the streetscape between Jefferson and N. Webster will focus on creating:

- Retail along street
- Gathering spaces along sidewalks
- Be pedestrian friendly

# Gateway Sign at Mulberry and Jefferson







Mulberry Street East - Before





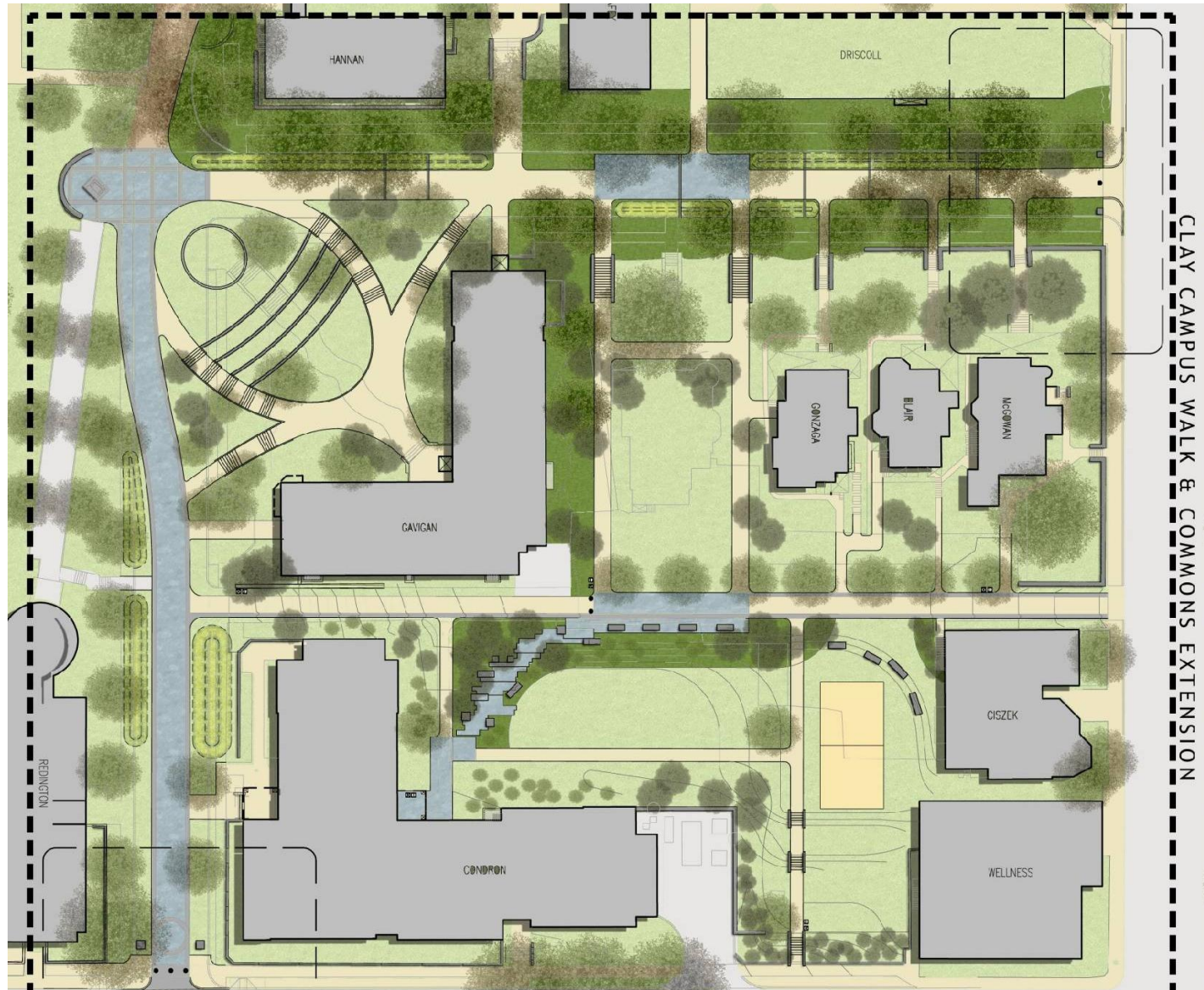
Mulberry Street East - After

# Commons Extension Project

- Phase One - 2009
  - Extend Commons from Clay Ave to Webster.
  - 300 Clay Block from Mulberry to Linden.
  - Condron Hall Landscaping
  - Mahon Court
  - Gavigan Hall Entrance
- Phase Two – 2010
  - Demolish Luzerne House
  - Complete surfacing of Mahon Court



# Commons Extension Project





## Clay Avenue Project







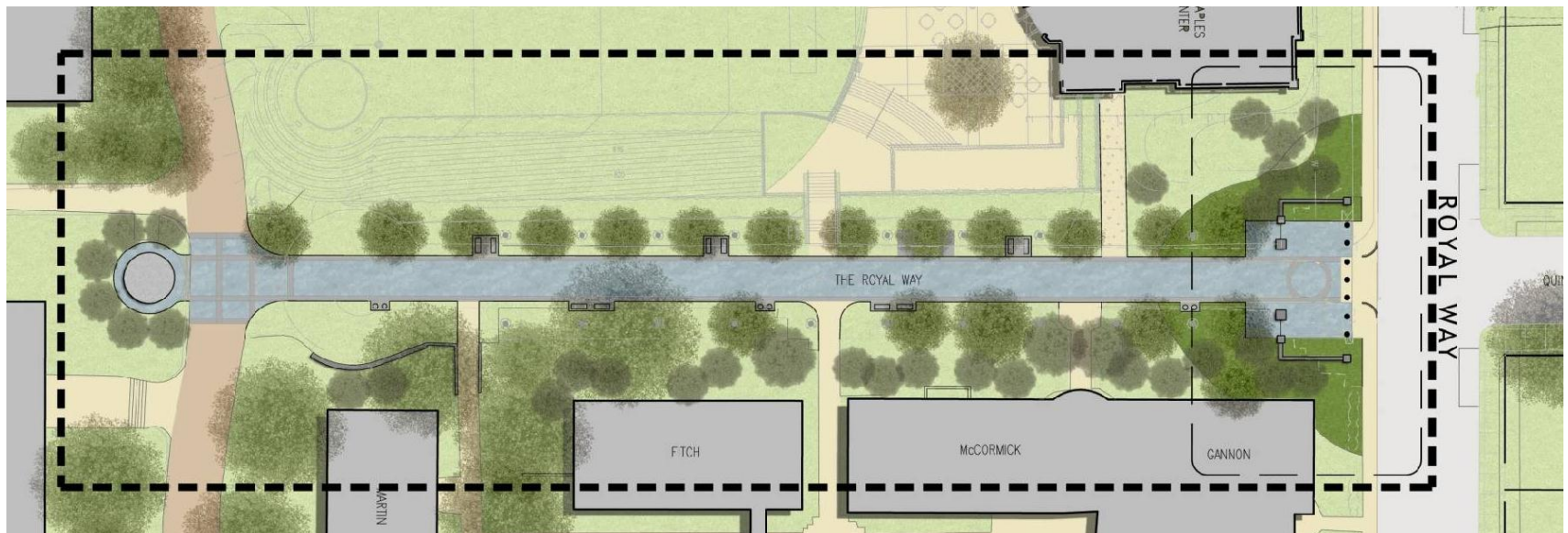
Mahon Court

Commons to Webster Ave.

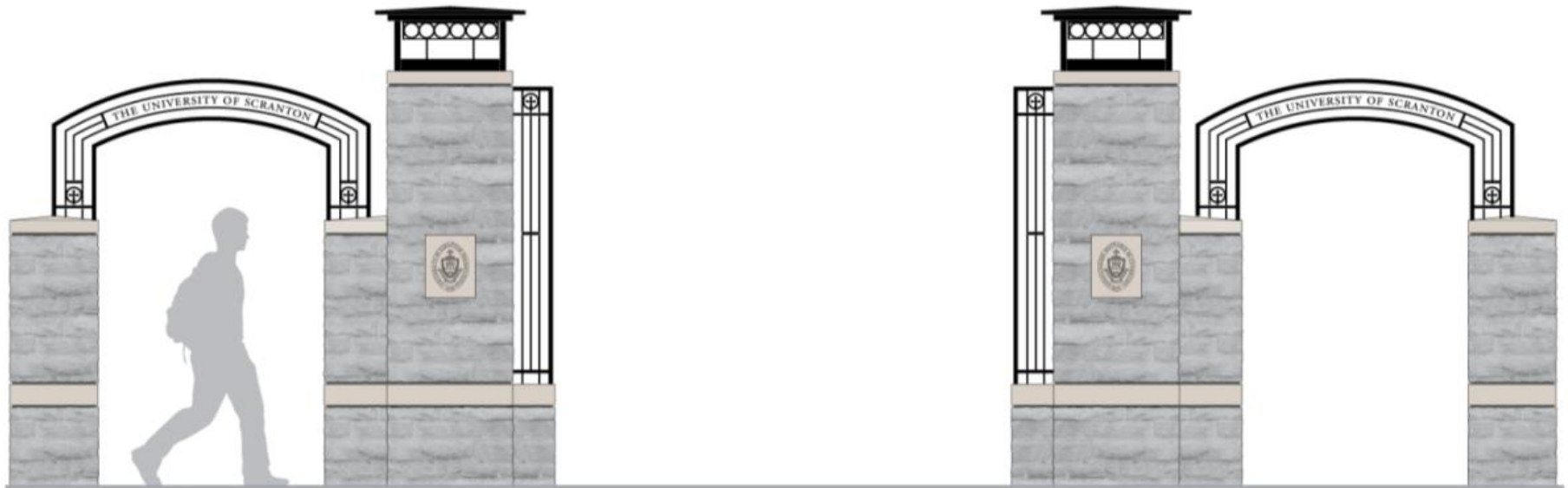




# Royal Way Project



# Royal Way Entrance Gates @ Mulberry Street



# Unified Science Facility

- Einhorn Yaffee Prescott
- Quandel Construction Services (CM)
- \$85 million Project
  - Classrooms (18)
  - Fully Unified Science Center
  - Connection to Commons
  - Phased Construction
  - Loyola Hall demolished or reused at completion of project.

# Unified Science Facility

- Phase 1 – October 2009 to July 2011
  - New building with renovations to 2<sup>nd</sup> floor of St. Thomas & Harper McGinnis – Complete July 2011
- Phase 2 - June 2011 to July 2012
  - Renovations to 1<sup>st</sup> and 3<sup>rd</sup> floors of St. Thomas and Harper McGinnis.
  - Life safety upgrades to 4<sup>th</sup> and 5<sup>th</sup> floors of St. Thomas and Harper McGinnis.
- Phase 3 – June 2011 to May 2012
  - Complete entrance way to Commons.

# Science Center Relocation Plan

- Phase 1 Completion – July 2011
- Laboratories Operational
- Science Faculty offices – Loyola Hall
- June - August 2011
  - Relocate History, Philosophy, and Theology faculty from east wing to new offices in USC.
  - Move Computer Science and Physics Faculty to USC
  - Relocate Provost staff to IMBM
  - Relocate Mathematics Dept. faculty to west wing.
    - Cubical furniture in Classrooms
  - Emeritus Faculty Room
- Radio Station to remain operational in current location.
- CTLE
  - Temporary move to east wing.
  - Operational for August 2011.



# Unified Science Facility – Site Plan





Ernest Yaffee Pappas  
Architectural & Engineering, P.C.  
225 Canal Street, 10th Floor  
New York, NY 10014  
Telephone: 917-881-6000  
Fax: 917-881-6100  
eyappas.com

EYP/

CONSULTANTS  
SITE/CIVIL ENGINEER  
CECO ASSOC., INC.  
Superior Electric Building  
PO Box 986  
Scranton, PA 18501  
P: 570.342.3101

LANDSCAPE ARCHITECT  
M. BARD & CO.  
115 West Avenue, Suite 202  
Jenkinson, PA 16840  
P: 218.887.5223

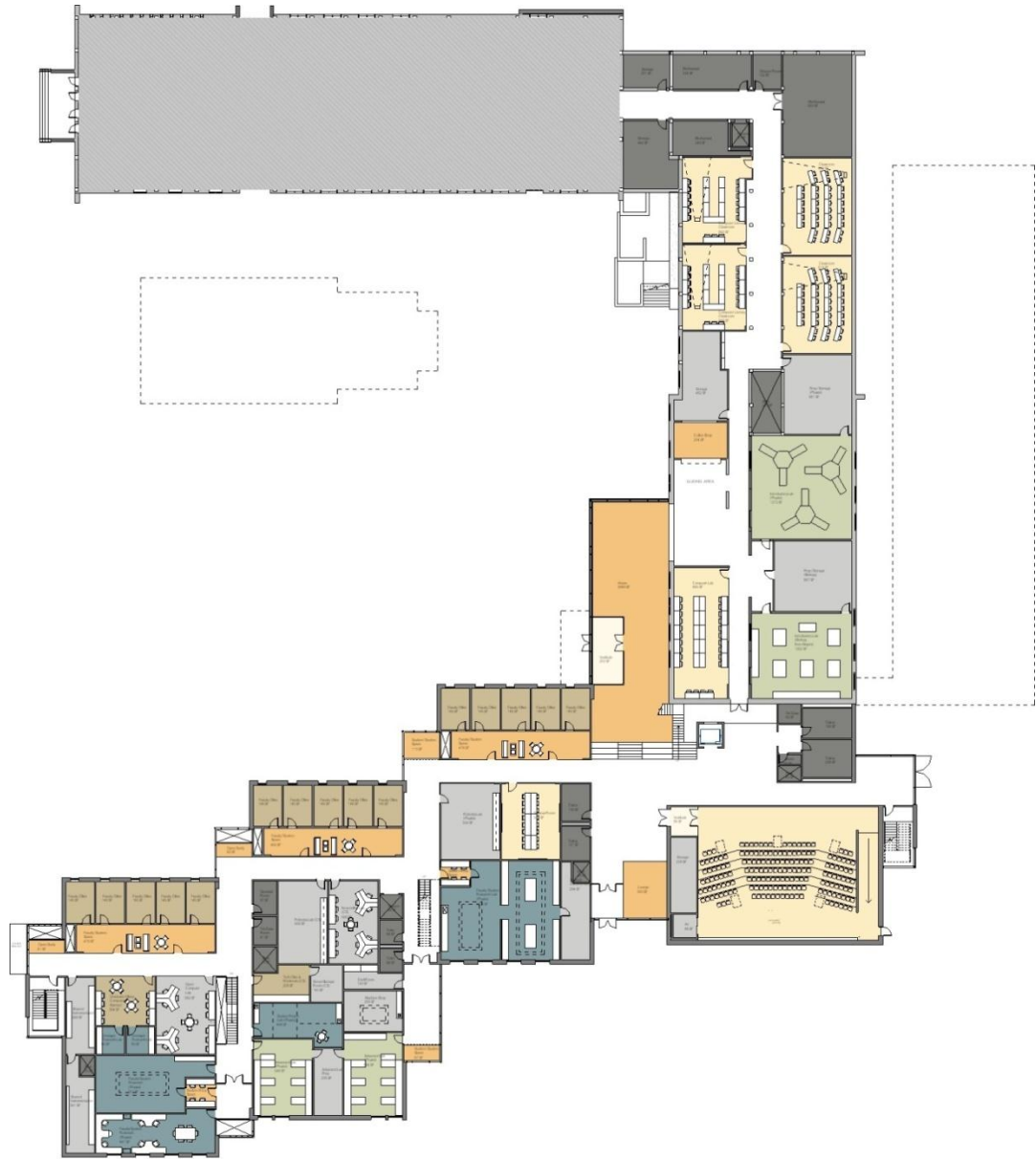
**SITE PLAN: CATLIN HOUSE**  
The University of Scranton  
New Integrated Science Center

SCALE: 1" = 10'-0"  
DATE: 02/07/11

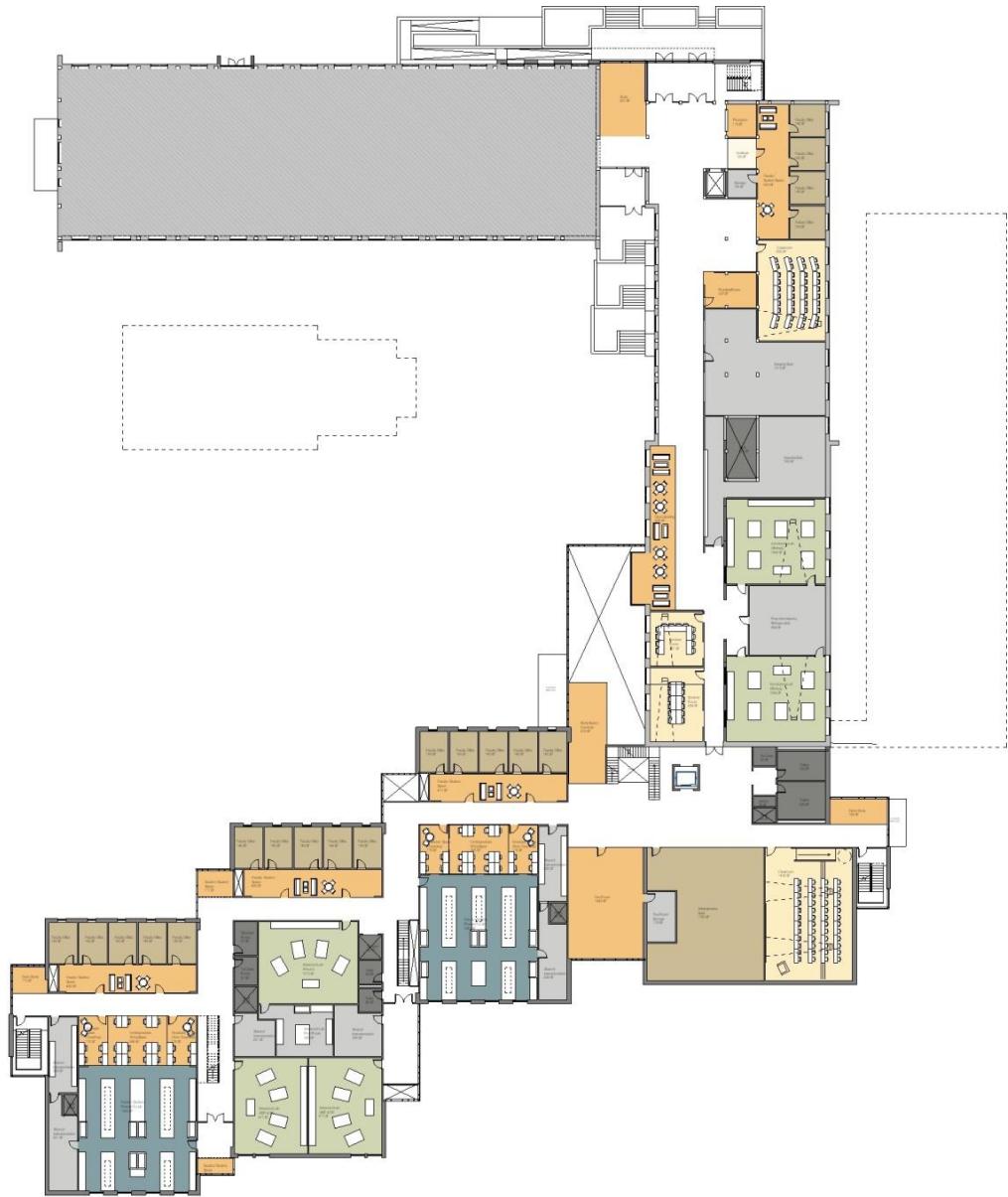
Catlin House and USC Landscape Plan



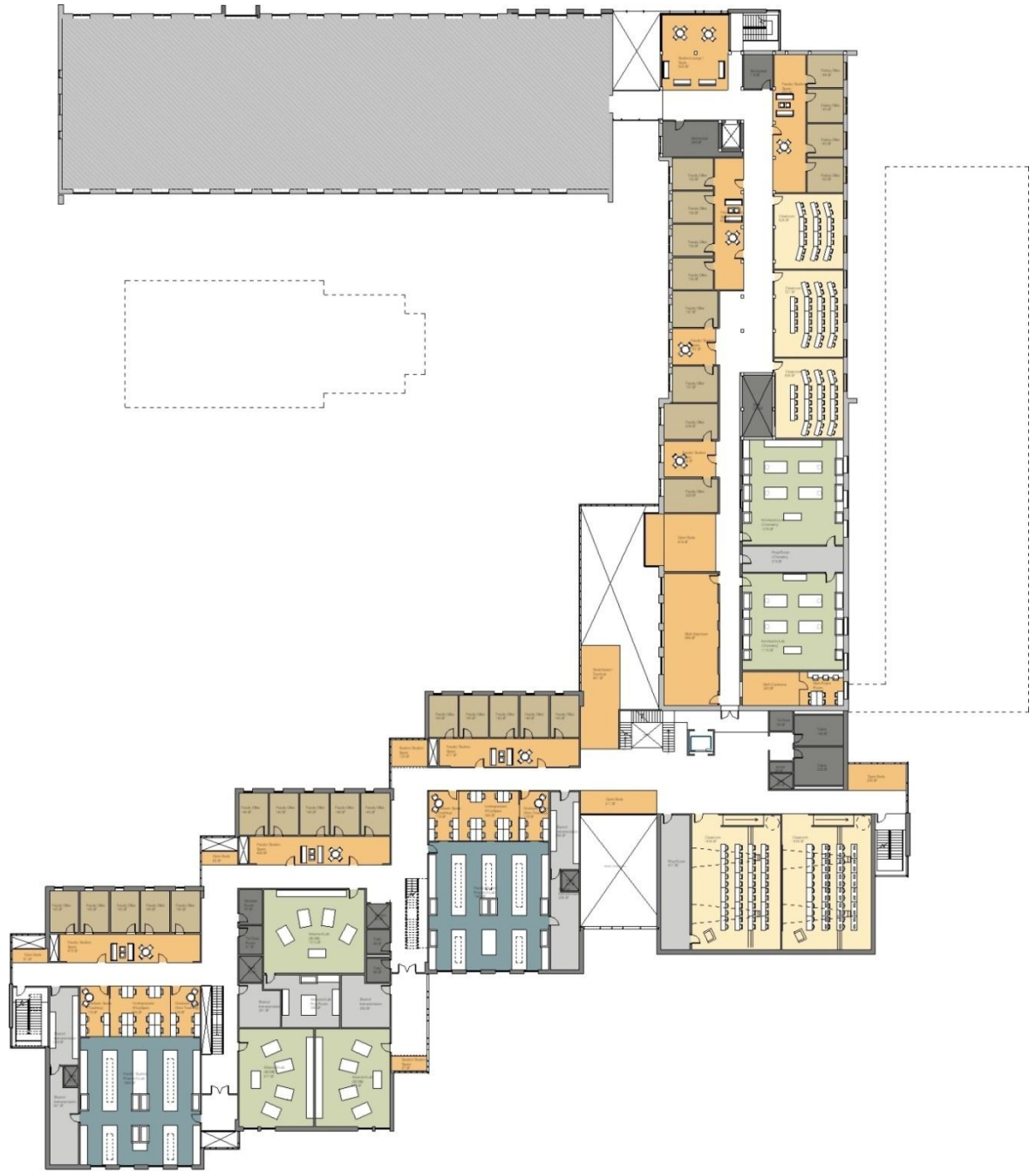
# First Floor



# Second Floor



# Third Floor

























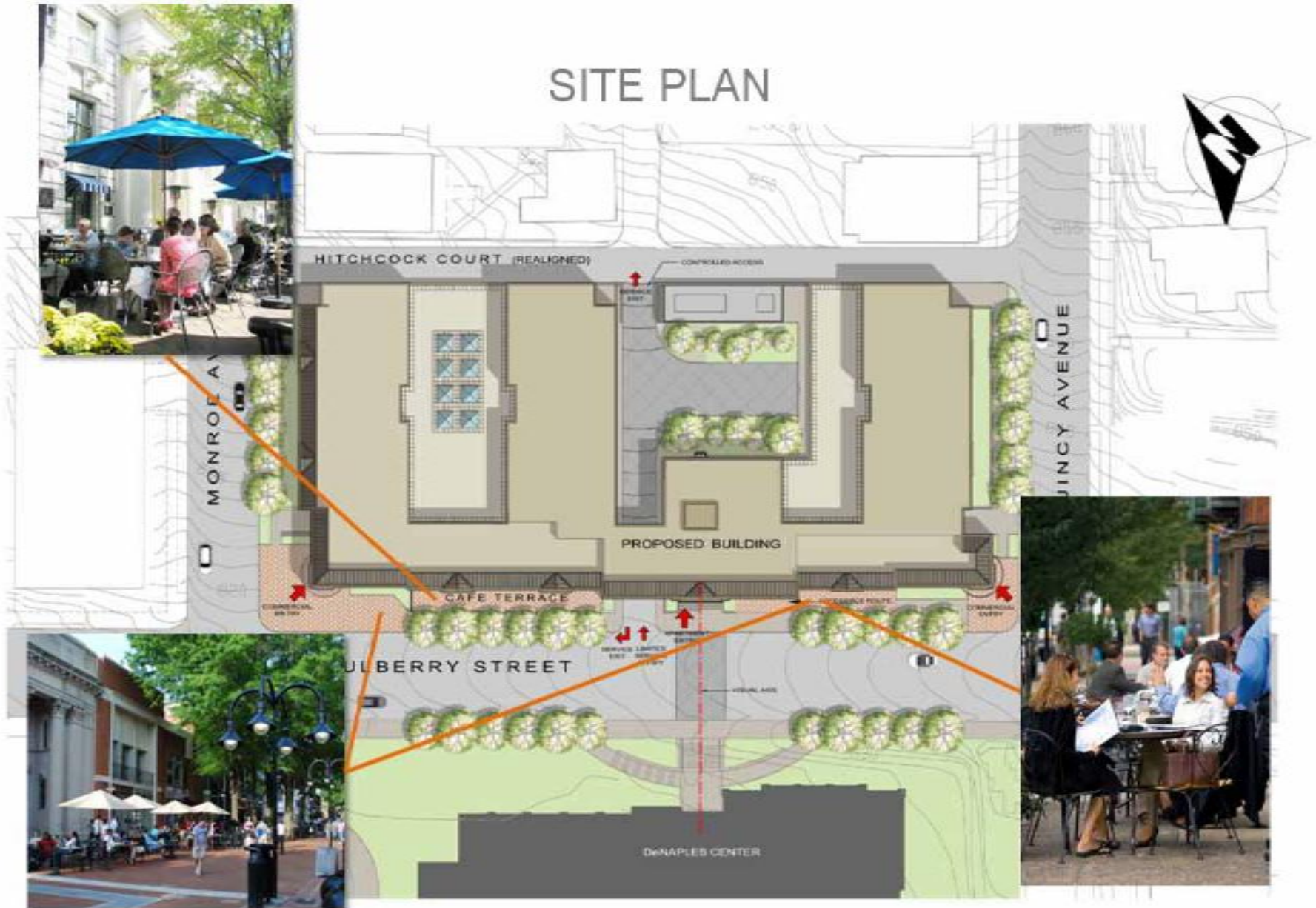
View from Central Scranton Expressway

# Upperclass Residence Halls

- Two Buildings (195,400 sf. total)
  - 400 Beds
  - 10 – 2 Bedroom Apts
  - 94 – 4 Bedroom Apts.
  - Visitor Apartment
  - Jesuit Apartment
  - Resident Director Apartment
- Fitness Center (14,475 sf.)
- Food Service Operation and Convenience Store  
(9,110 sf)
- Scheduled to Open for Fall 2011
  - Fitness and Food Center open in Nov 2011.

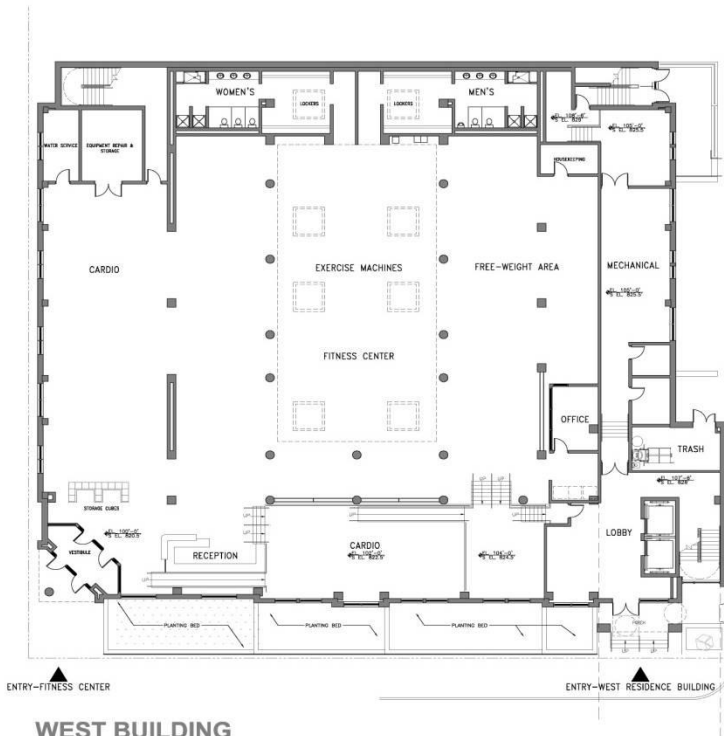
# Mulberry St Housing

## SITE PLAN



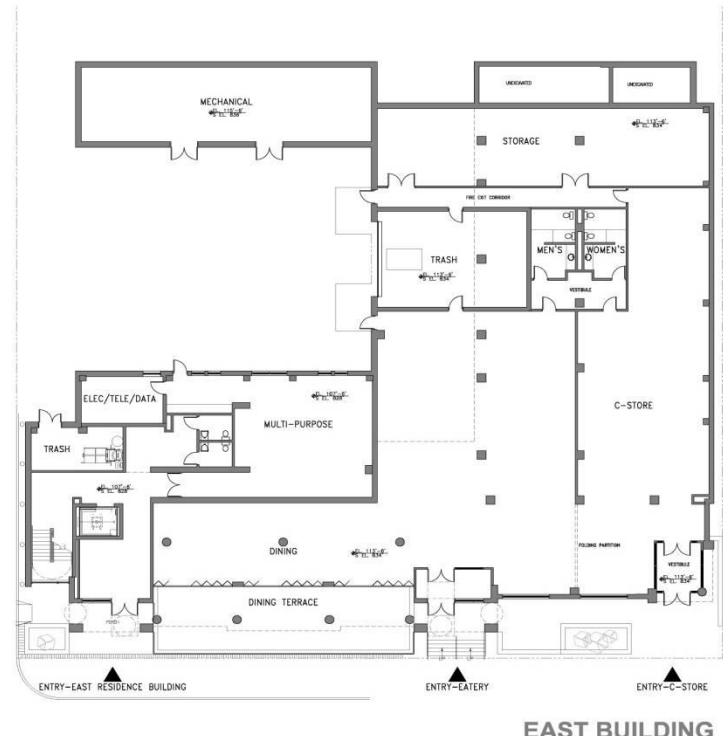


# Mulberry St Housing



WEST BUILDING

HITCHCOCK COURT



EAST BUILDING

MULBERRY STREET

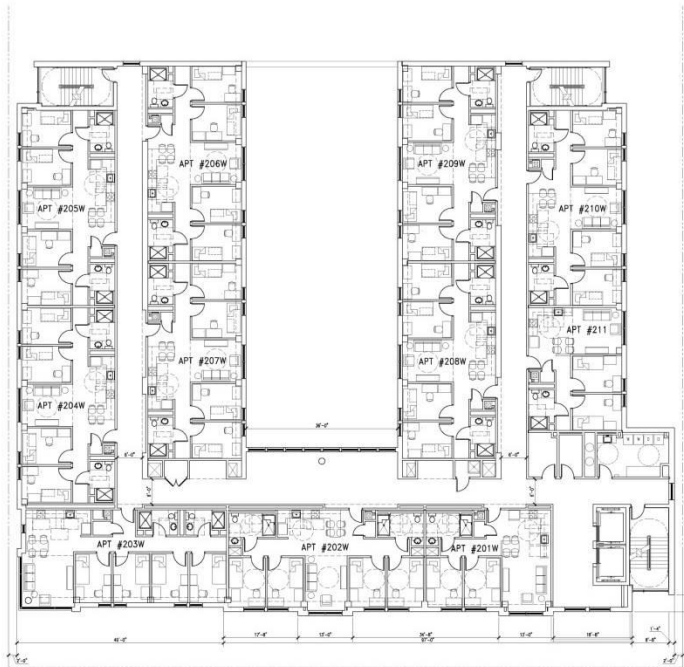
## U of S - Upper Class Residence Hall - GROUND FLOOR PLAN

Scranton, PA  
July 16, 2010

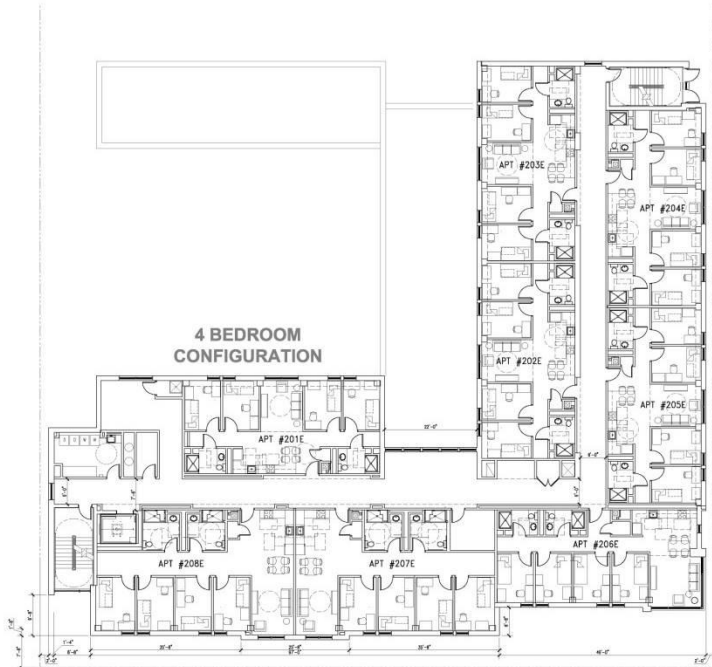
hemmler + camayd architects



# Mulberry St Housing



WEST BUILDING



EAST BUILDING

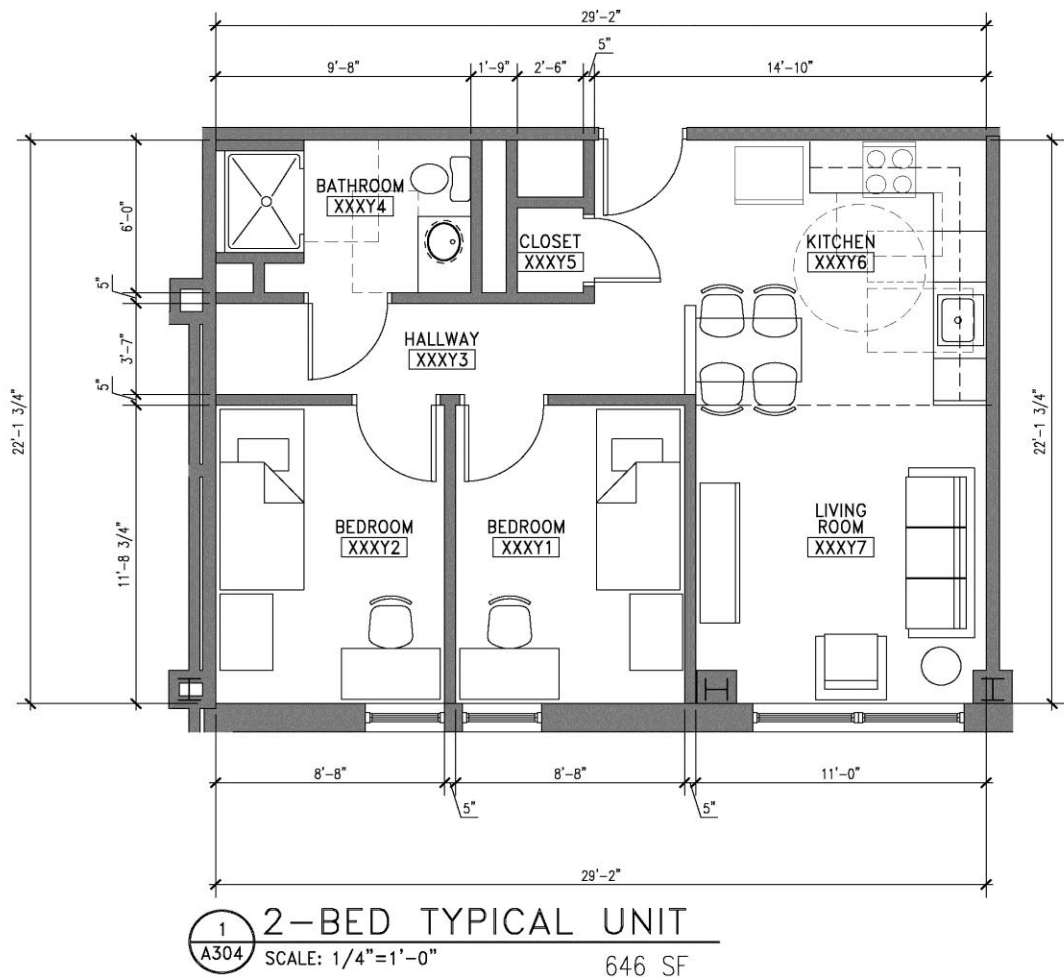
U of S - Upper Class Residence Hall - TYPICAL 2nd-6th FLOOR APARTMENT PLAN

Scranton, PA  
July 13, 2010

hemmler + camayd architects

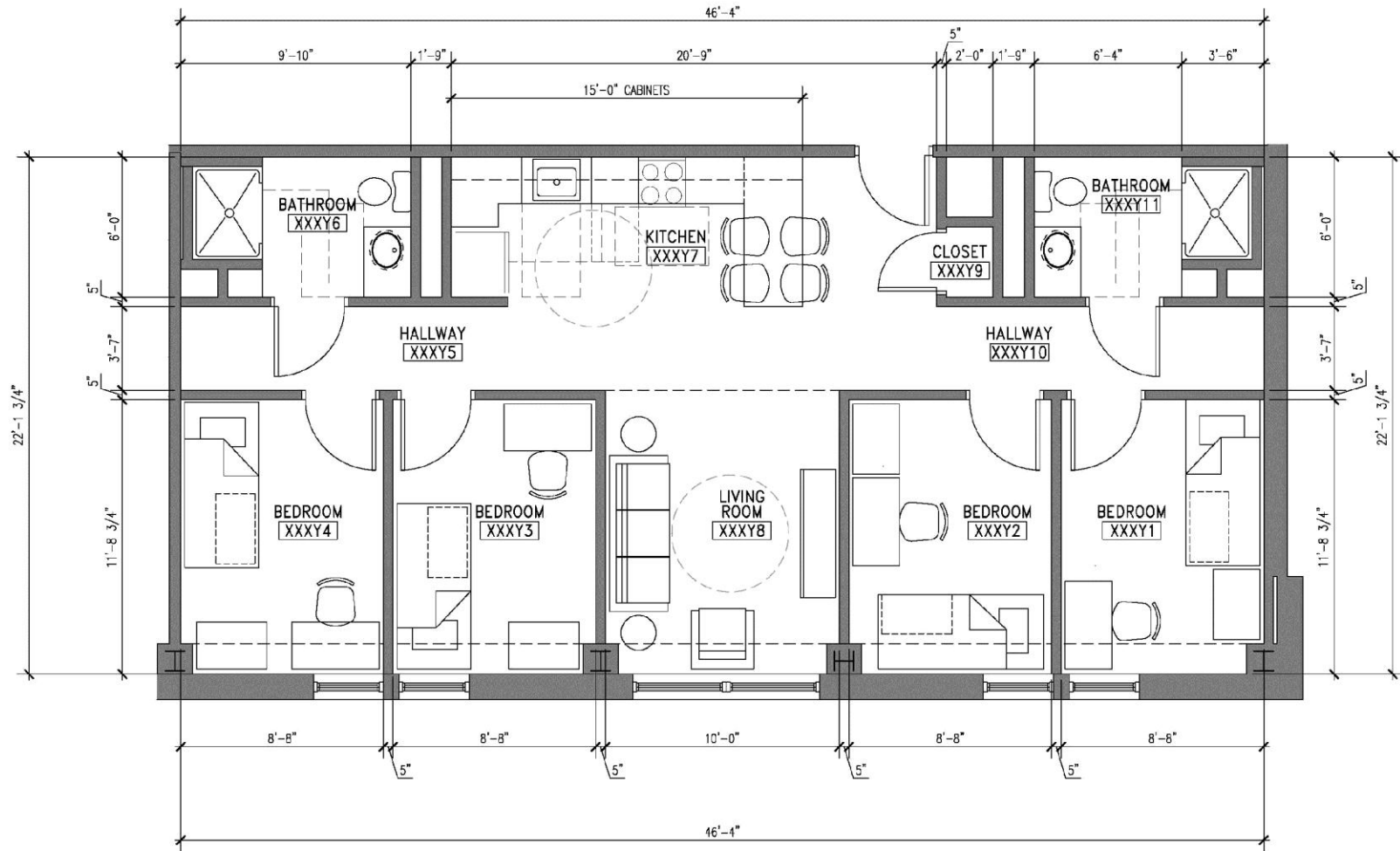


# Mulberry St Housing





# Mulberry St Housing



1 4-BED TYPICAL UNIT  
A300 SCALE: 1/4"=1'-0" 1026 SF

# Mulberry Street Housing



# Mulberry Street Housing











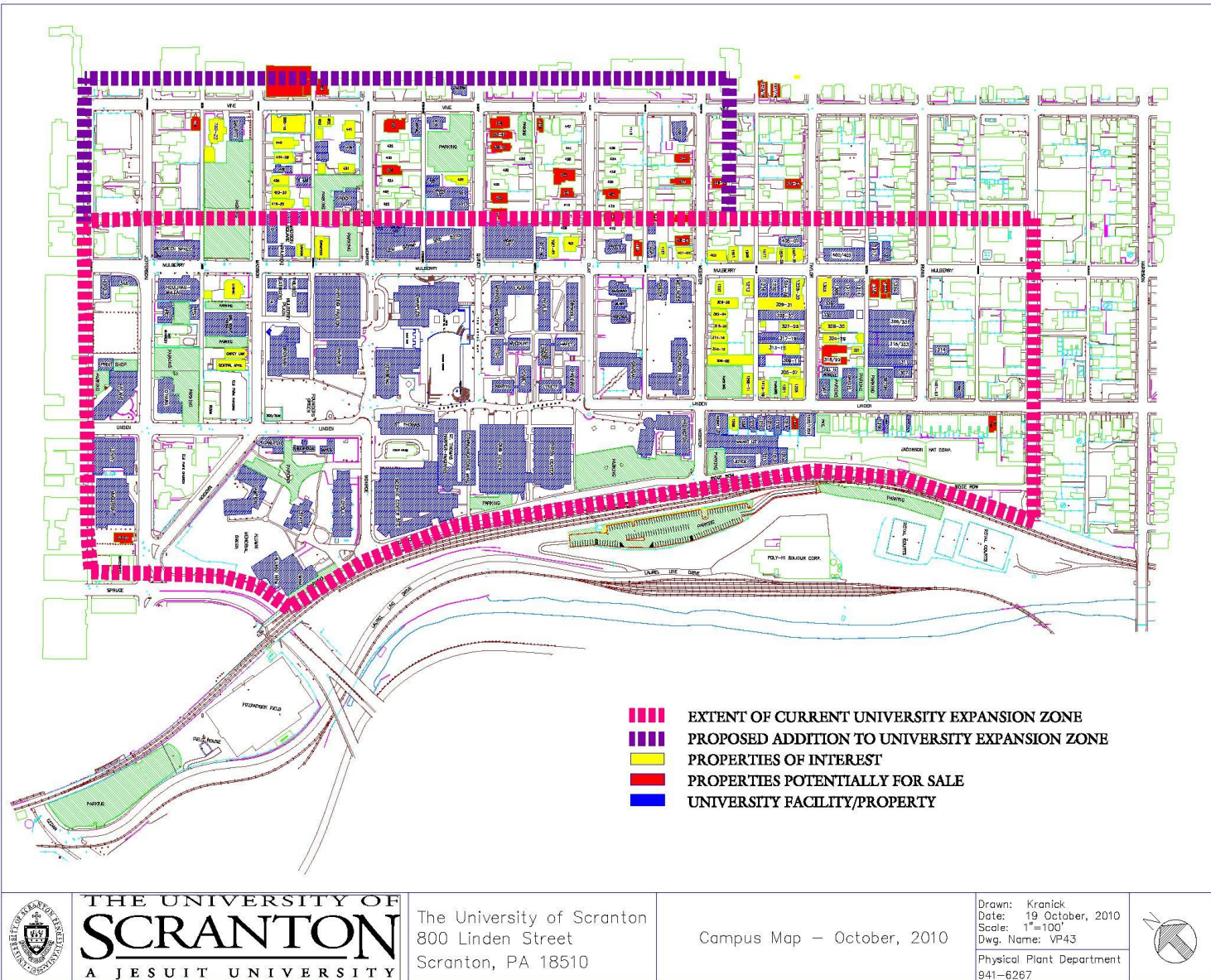
# Mulberry Street Housing



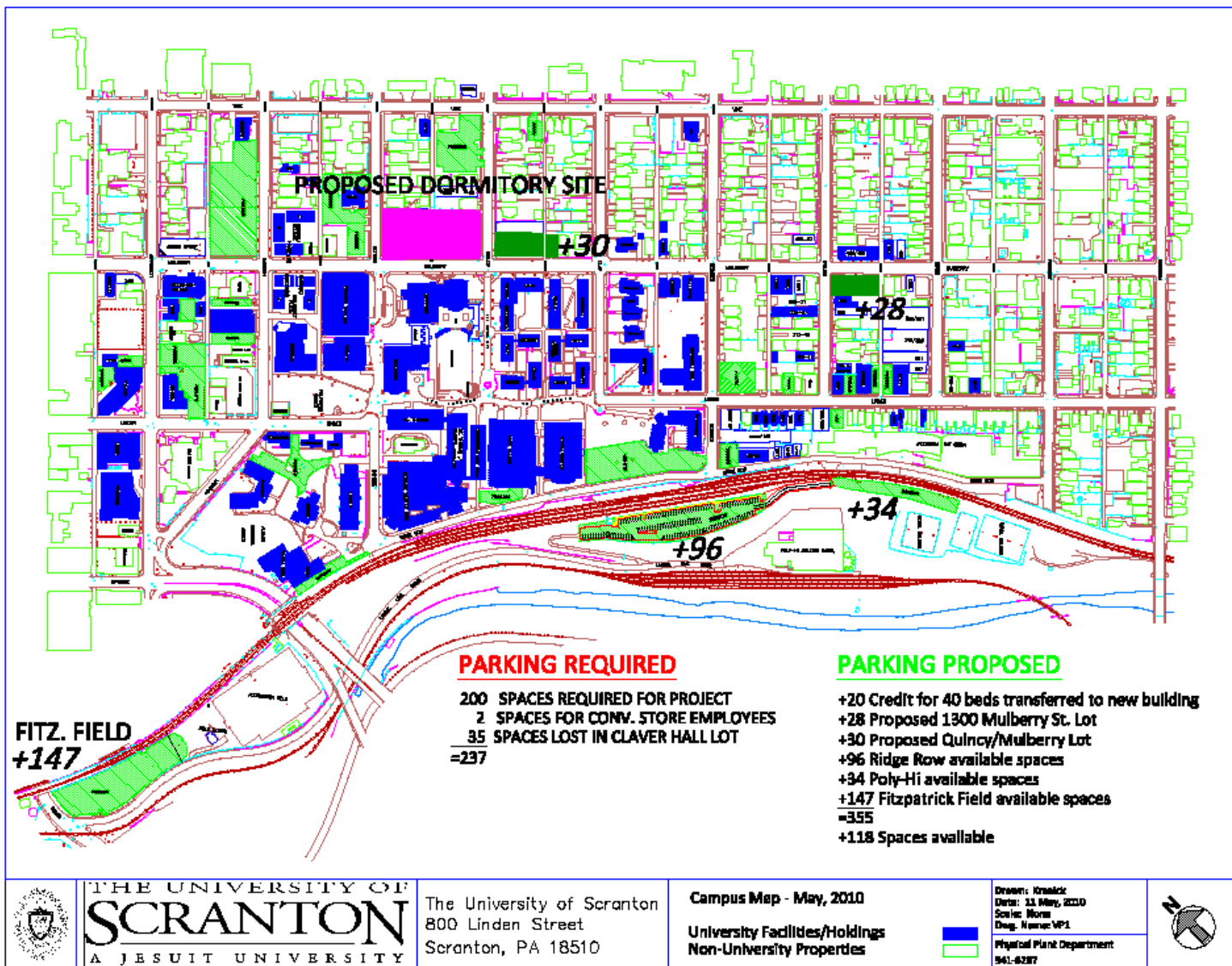
# Mulberry St Development







## Proposed Property Acquisition Plan





Questions ?