

# Staff Senate

## Physical Plant Facilities Update

18 August 2009



# Facilities Report

- Inventory – 76 Buildings
  - 34 Academic/Administrative Buildings
  - 27 Dormitories
  - 10 Campus Houses
  - 3 Homestead Properties
  - 2 Storage Buildings
  - Fitzpatrick Field
  - Southside Sports Complex
  - Springbrook Property
  - Roaring Brook Property
  - Grounds, Commons , Royal Way and Parking Lots,
- 1985 – 40 Buildings – 760,000 gsf. (approx.)
- 2009 – 76 Buildings – 1,800,000 gsf. (approx.)
- 1990 – 485 Capital and Plant Projects
  - \$263,000,000 budgeted for projects.
- 2000 – 140 FIP Projects
  - \$5,000,000 budgeted.

# Project Update

- Estate Renovations for Admissions
- Hill Lighting Project
- Byron Pool Upgrade
  - Virginia Graham-Baker Pool and Spa Safety Act
    - Anti-entrapment Drain Covers and Equipment Upgrades
- Chapel of the Sacred Heart
- Renovations for Human Resources and Financial Aid
- Entrance to the Parking Pavilion
- Dormitory Renovations and Upgrades.
- Property Acquisitions and Demolitions
- Surface Parking Lots
- Landscaping
- Concrete Repairs and Maintenance

# Hill Lighting Project

- Project Limit
  - Jefferson to Irving Aves., Between Mulberry and Vine Sts.
  - Improve safety and security.
  - Vintage light fixtures.
  - Tree trimming, removal and replacement.



# Chapel of the Sacred Heart

- Renovation to the Rupert Meyer House.



# Renovations for Human Resources and Financial Aid in St. Thomas Hall

- Renovations to First floor.
  - Started Construction on July 20. Complete in October/November.
  - Space Vacated by St. Ignatius Chapel
  - Offices for HR
- Renovations to Fourth Floor
  - Existing office area of Financial Aid.
  - Renovations to space vacated by Admissions



# Annual Dormitory Renovations and Upgrades

- 27 Dorms – 10 campus houses – 1,405 rooms.
  - Repairs and Painting – 3 additional painters.
- \$500,000 Allocated for Upgrades in the Capital Plan
  - Mattress Replacement Program
  - Light fixture replacements.
  - Roofs on DE and McGowan
  - Inspections and painting in all 1400 rooms.
  - Carpeting replacement
  - Linden Plaza Appliance replacement
  - Laundry Facility upgrades to swipe systems
  - Accessible Room conversions and upgrades.

# Property Acquisitions

- Girl Scout Building
- 1218 Linden
- 1222 Linden





# Property Acquisitions

- Moskowitz Properties
  - Linden St.
  - Mulberry St.



# Demolitions

- Montgomery House
- Jerrett House

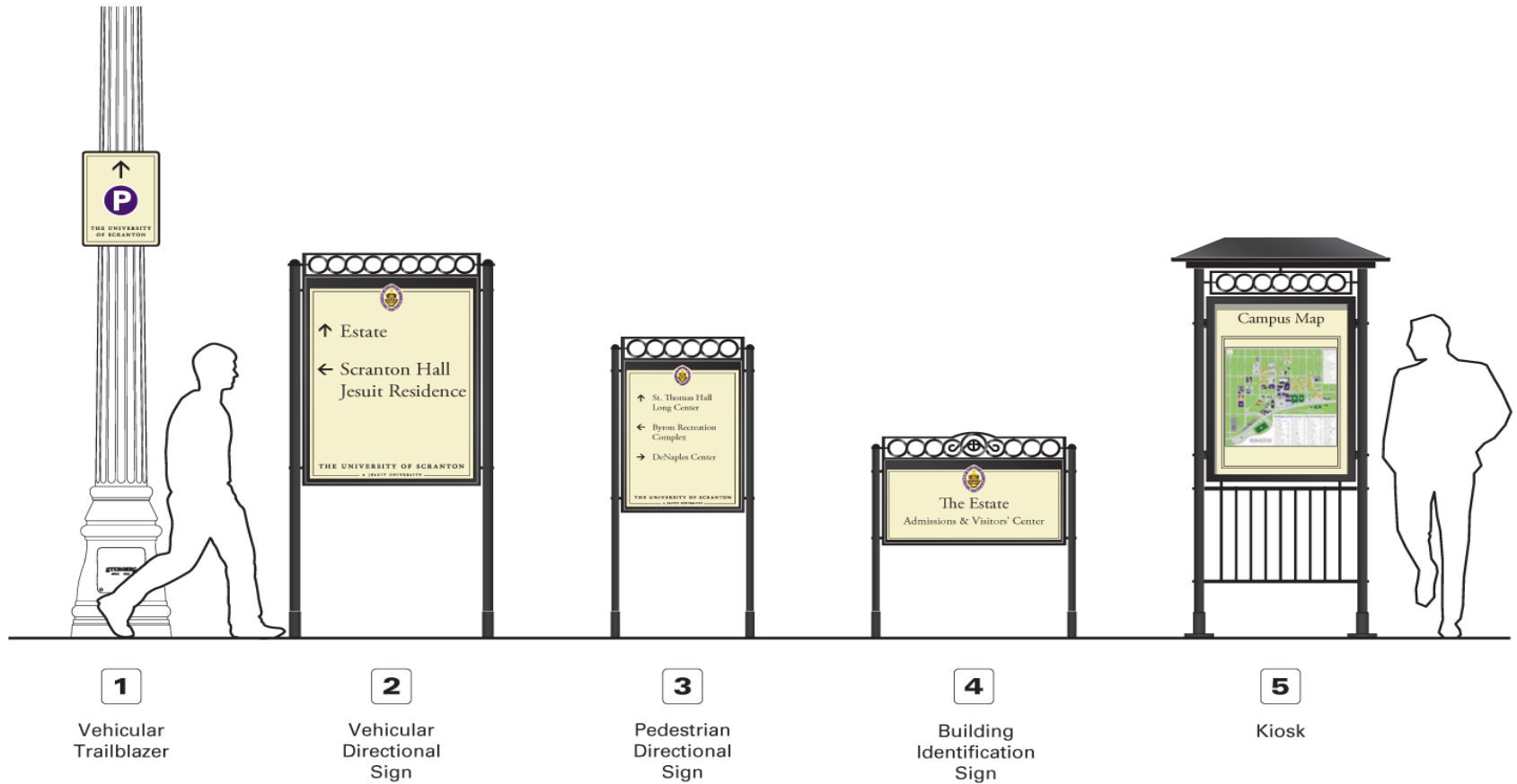


# Signage and Wayfinding Plan

- Ayers Saint Gross
- Wayfinding
  - Direct people to various destinations
  - Parking Pavilion to Admissions
  - Major Building Listing
- Signage
  - Building Signs
  - Kiosks and Map Tables
- Implement Phase 1 in Fall 2009



# Signage and Wayfinding Plan

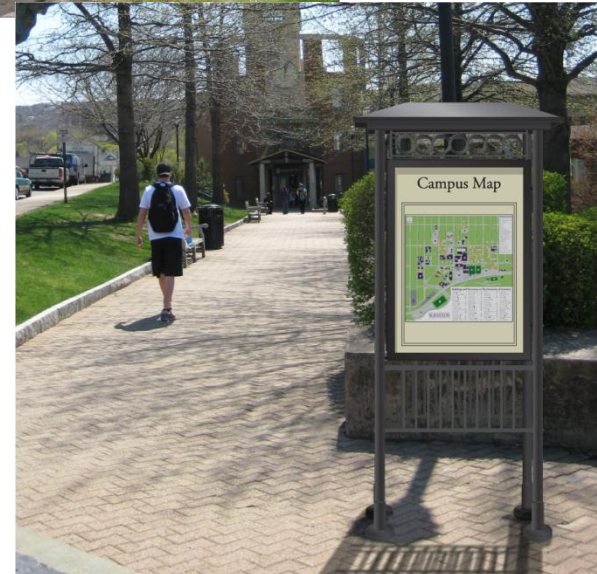


# Infinity Ribbon for Signs and Rails





# Signage and Wayfinding Plan



# Signage and Wayfinding Plan

THE UNIVERSITY OF  
**SCRANTON**  
A JESUIT UNIVERSITY

915 Mulberry St., Scranton, PA 18510

No. Date Revision  
— 07/13/2009 50% DI PROGRESS PRINT

Notes

**AYERS  
SAINT  
GROSS** 1040 Hull Street  
Suite 100  
Baltimore, MD 21230  
T: 410.347.8500  
F: 410.347.8519

Project Number Document Title  
20805.06 50% Design Intent Set  
Not for Construction

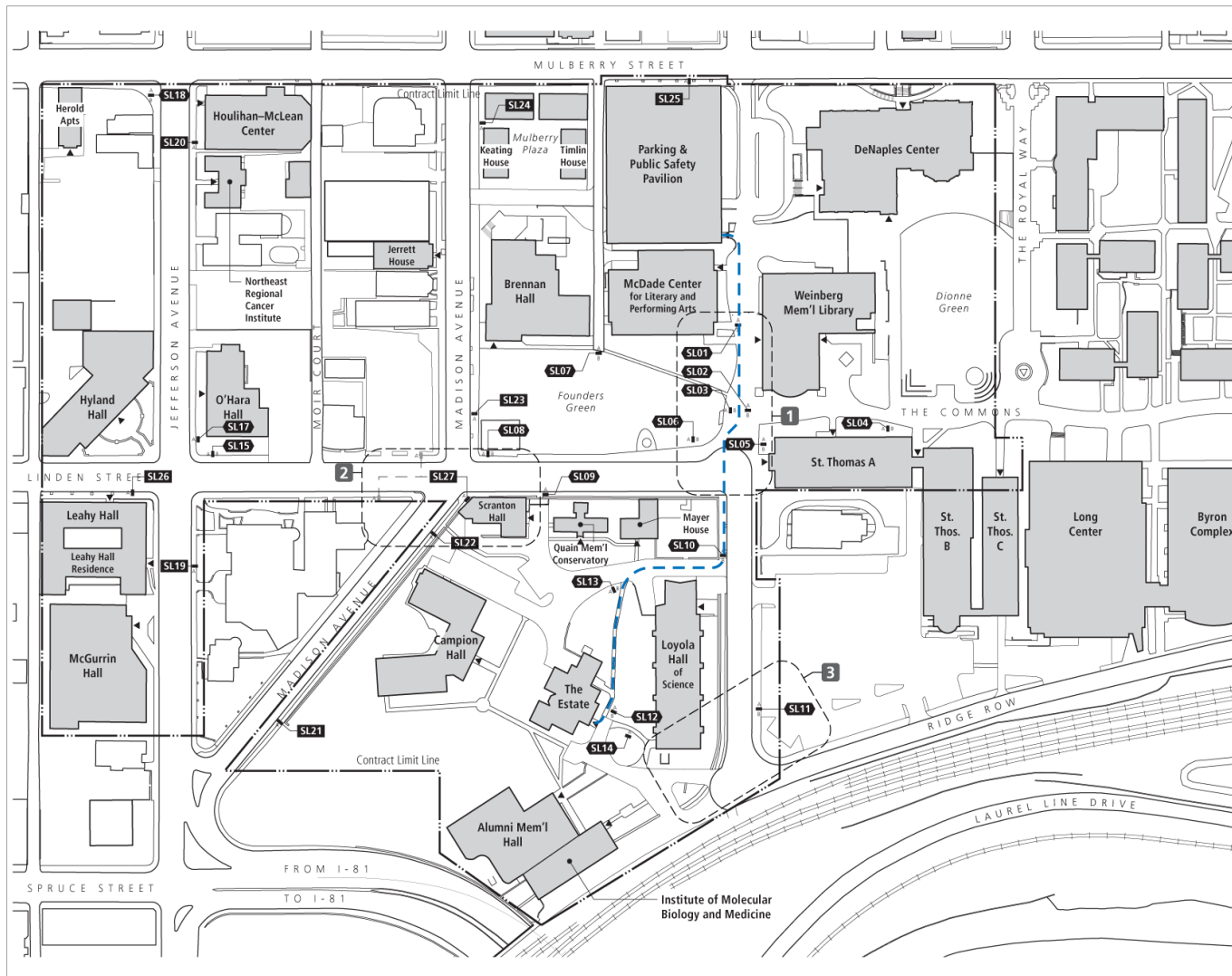
Project Name  
The University of Scranton  
Campus Signage Program – Phase I

Sheet Title

**Sign Location Plan**

Date Sheet No.  
07.13.2009 SL100

Copyright © 2009 AYERS | SAINT | GROSS



# Landscape Improvement Projects

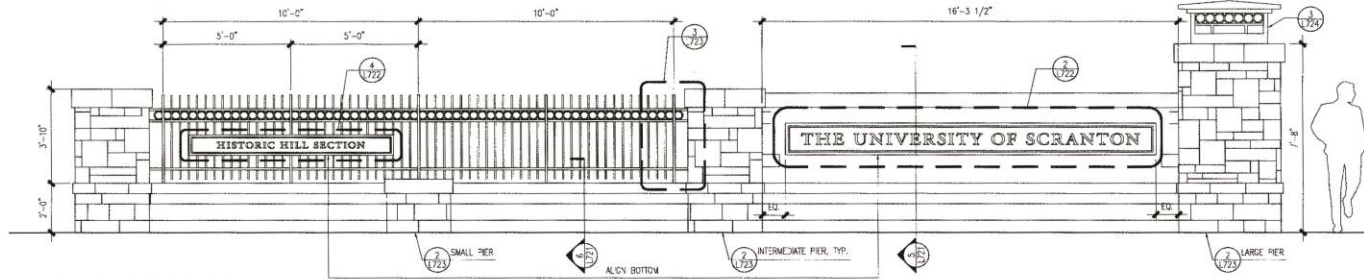
- Ayers Saint Gross
  - Mulberry Street Improvement Project
    - City and Penn DOT Approvals
    - September - December
  - Commons Extension Project
    - Condrón & Gavigan Halls landscaping.
    - Commons from Clay to North Webster Ave.
    - Clay Avenue between Mulberry and Linden.
  - Royal Way
    - Gateway @ Mulberry to Catlin Court.
    - Fountain and Statue of St. Ignatius

# Mulberry Street Improvement Project

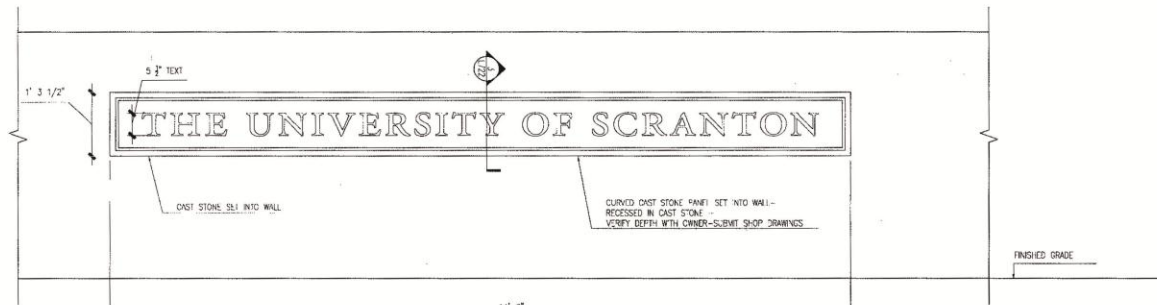
- Gateway Sign
  - Under Construction – Completion in early September.
- Phase One
  - Jefferson Ave to Madison Avenue
  - Project was bid and is ready to commence.
  - Awaiting approval of City ordinances and resolutions.
  - Completion in the Fall 2009.
- Phase Two
  - Madison Ave. to Quincy Ave.
- Phase Three
  - Quincy Ave. to Webster Ave.



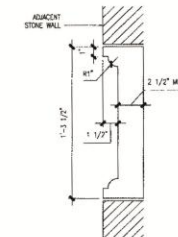
# Gateway Sign



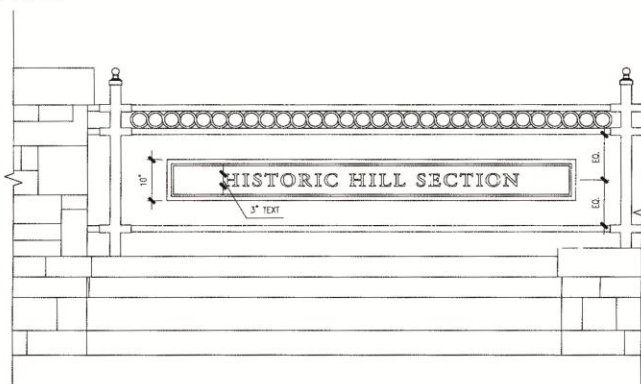
1 ORNAMENTAL PICKET FENCE ELEVATION  
SCALE: 1/2"=1'-0"



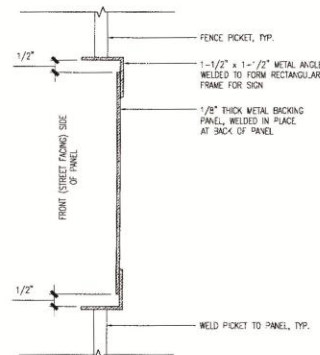
2 CAST STONE SIGN - ELEVATION  
SCALE: 1"=1'-0"



3 CAST STONE SIGN - SECTION  
SCALE: 3"=1'-0"



4 METAL PANEL SIGN ELEVATION  
SCALE: 1"=1'-0"



5 METAL PANEL SIGN ELEVATION  
SCALE: 8"=1'-0"

## NOTES

1. ALL OUTSIDE EDGES TO BE DRESSED WITH 1/4" WIDE BRUSH HAMMER FINISH. SUBMIT SHOP DRAWINGS FOR REVIEW.
2. NEW STONE WALLS ARE INTENDED TO MATCH THE MATERIAL, FINISH AND CHARACTER OF THE PERIMETER WALLS OF SCRANTON HALL AT THE CORNER OF LINDEN ST. AND MADISON AVE.
3. CAST STONE, STAMPED CONCRETE, OR OTHER SIMULATED STONE PRODUCTS ARE NOT ACCEPTABLE SUBSTITUTES.

ASWLogoArch.jpg  
1340 N. 4th Street, Suite 100  
Dallman, Maryland 21220  
410.347.8000  
410.347.8008 Fax

ARCHITECTURE  
ENGINEERING  
INTERIOR DESIGN

BURKAVAGE  
DESIGN  
ASSOCIATES  
LLC

bdb

ARCHITECTURE  
ENGINEERING  
INTERIOR DESIGN

200 ARBONITE EXECUTIVE PARK  
LANE SUITE 100  
LIVESTOCK CITY, IN 46041-2200  
OFFICE: 773.441.0000  
FAX: 773.441.0001  
WWW: www.burkavagedesign.com  
GENERAL: 773.441.0001

UNIVERSITY OF SCRANTON  
MULBERRY STREET  
BID PACKAGE NO. 1 - ENTRY SIGN

DETAILS

APPROVED BY:  
DATE: 2/27/09  
JOB NO.: 07137.00  
SCALE: AS NOTED  
DWG NO.: L722

ALL DIMENSIONS AND FINISHES  
SHOWN SHALL BE VERIFIED  
BY THE CONTRACTOR IN THE  
FIELD  
CONSTRUCTION  
DOCUMENTS



# Mulberry St. Improvement Project



Mulberry Street is the focal urban edge of the campus. To enhance this gateway, redevelopment of the streetscape between Jefferson and N. Webster will focus on creating:

- Retail along street
- Gathering spaces along sidewalks
- Be pedestrian friendly

# Mulberry @ Monroe - Before





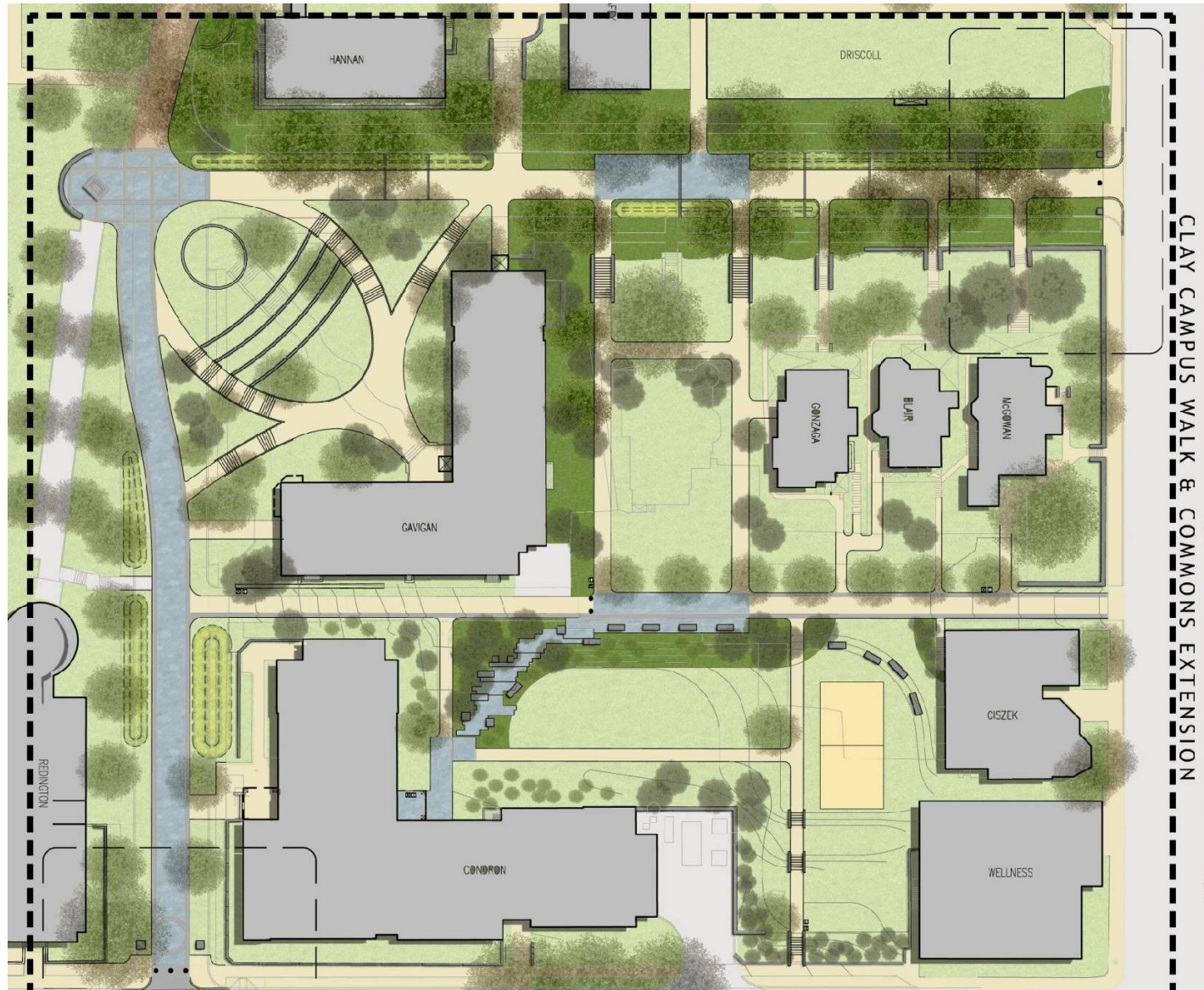
# Mulberry @ Monroe - After



# Commons Extension Project

- Phase One - 2009
  - Extend Commons from Clay Ave to Webster.
  - 300 Clay Block from Mulberry to Linden.
  - Condron Hall Landscaping
  - Mahon Court
  - Gavigan Hall Entrance
- Phase Two – 2010
  - Demolish Luzerne House
  - Complete surfacing of Mahon Court

# Commons Extension Project





# Examples of Entrance at Gavigan Hall



# Entrance to Commons @ Webster Avenue

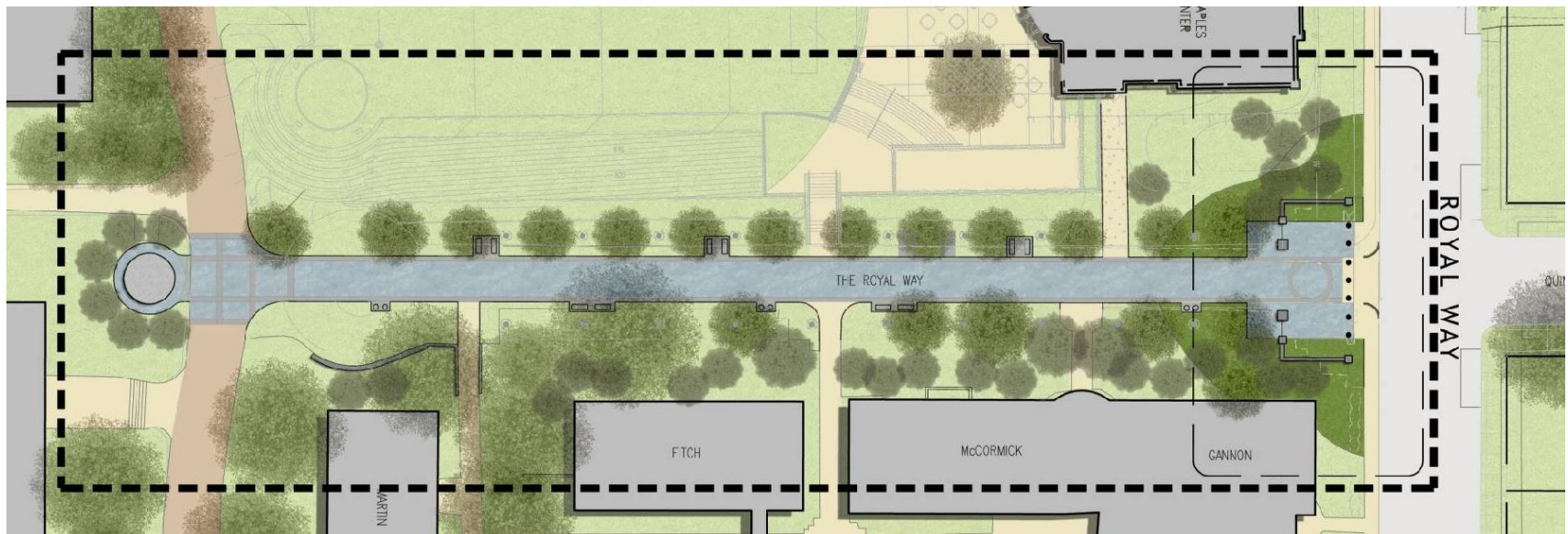




# Entrance to Commons @ Webster Avenue

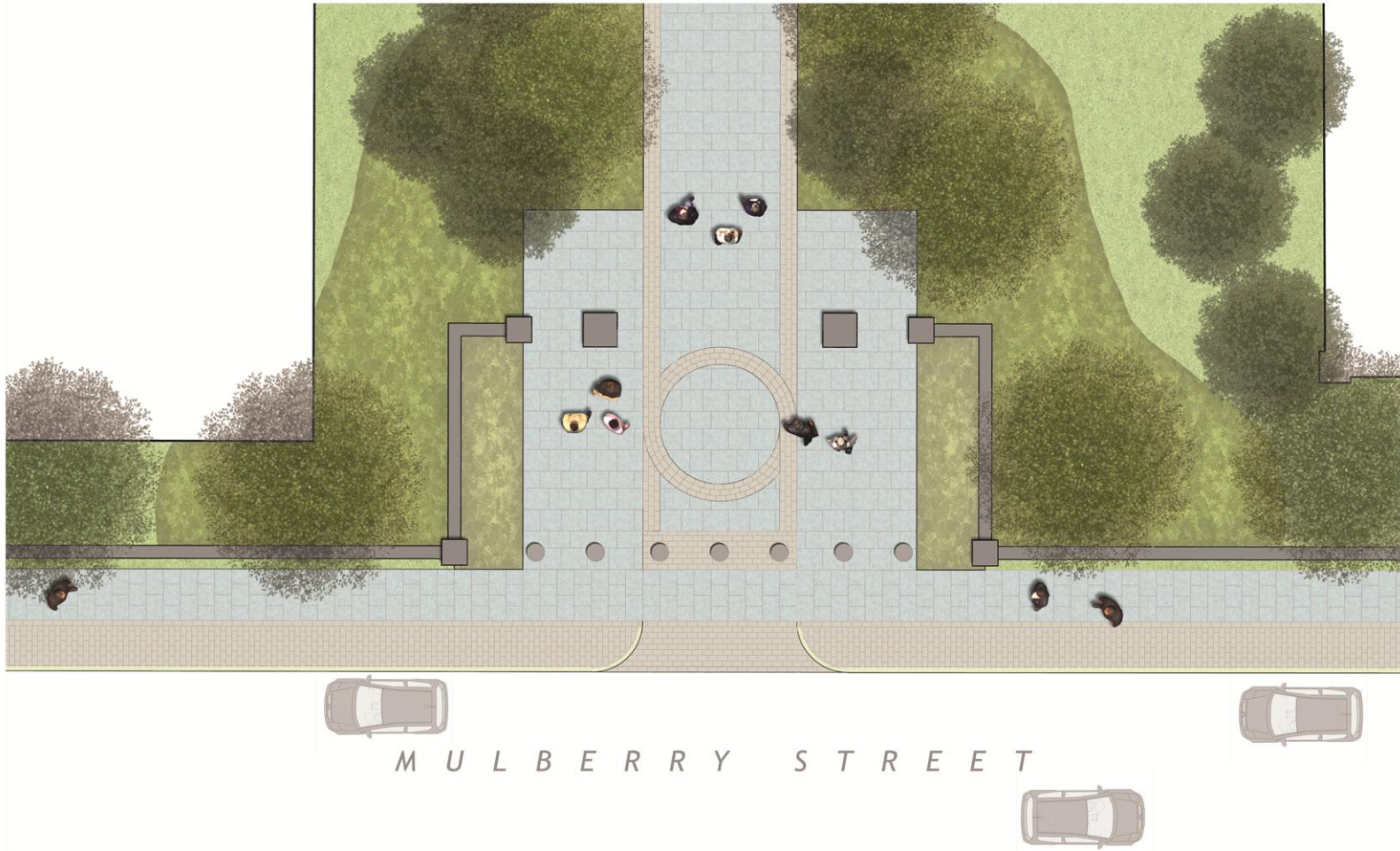


# Royal Way Project - 2010





# Royal Way Project

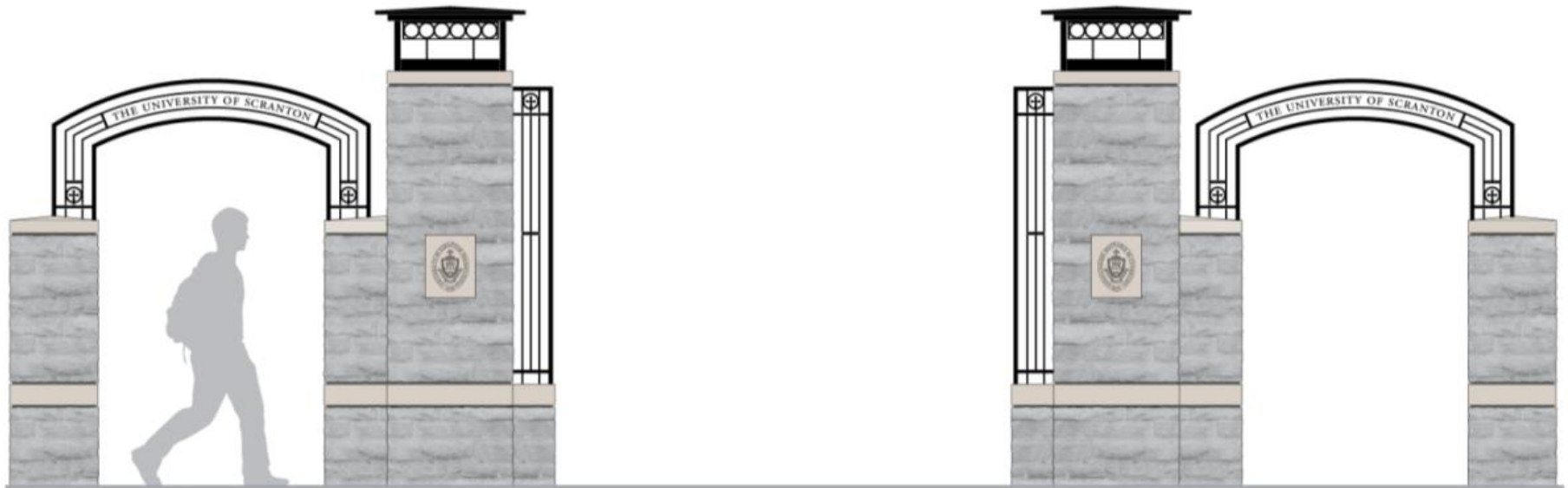




# Royal Way Project



# Royal Way Entrance Gates @ Mulberry Street



# Unified Science Facility

- Einhorn Yaffee Prescott
- Quandel Construction Services (CM)
- \$90 million Project
  - 100 % of Program
    - (95,000 programmable nsf., 166,000 gsf)
  - Classrooms (18)
  - Fully Unified Science Center
  - Connection to Commons
  - Phased Construction
  - Loyola Hall demolished at completion of project



# Unified Science Facility

- Phase 1
  - New building with renovations to 2<sup>nd</sup> floor of St. Thomas & Harper McGinnis.
- Phase 2
  - Renovations to 1<sup>st</sup> and 3<sup>rd</sup> floors of St. Thomas and Harper McGinnis.
  - Life safety upgrades to 4<sup>th</sup> and 5<sup>th</sup> floors of St. Thomas and Harper McGinnis.
- Phase 3
  - Complete entrance way to Commons and renovations to 1<sup>st</sup> and 3<sup>rd</sup> floors at entrance.

# Unified Science Facility – Site Plan

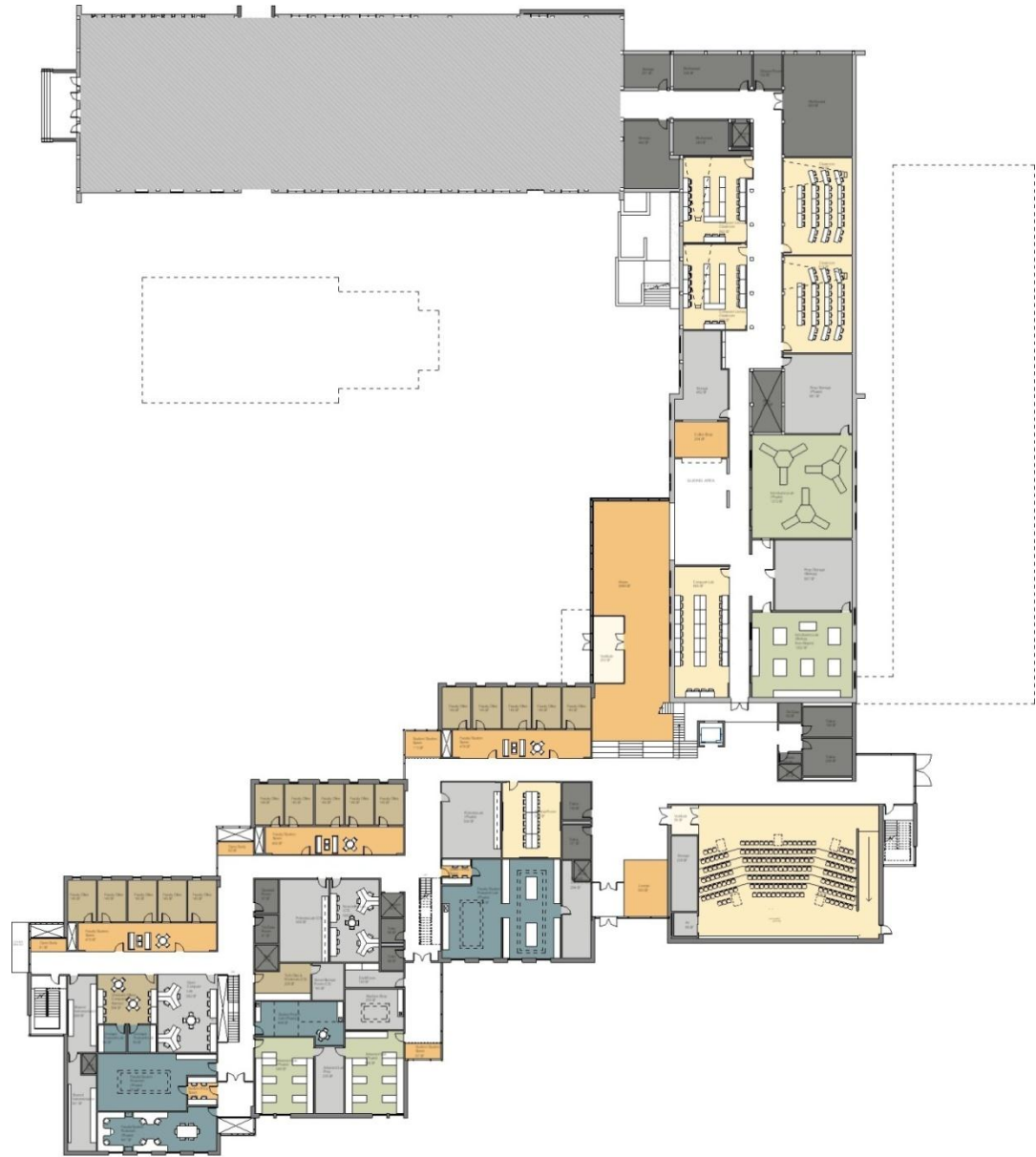


# Ground Floor

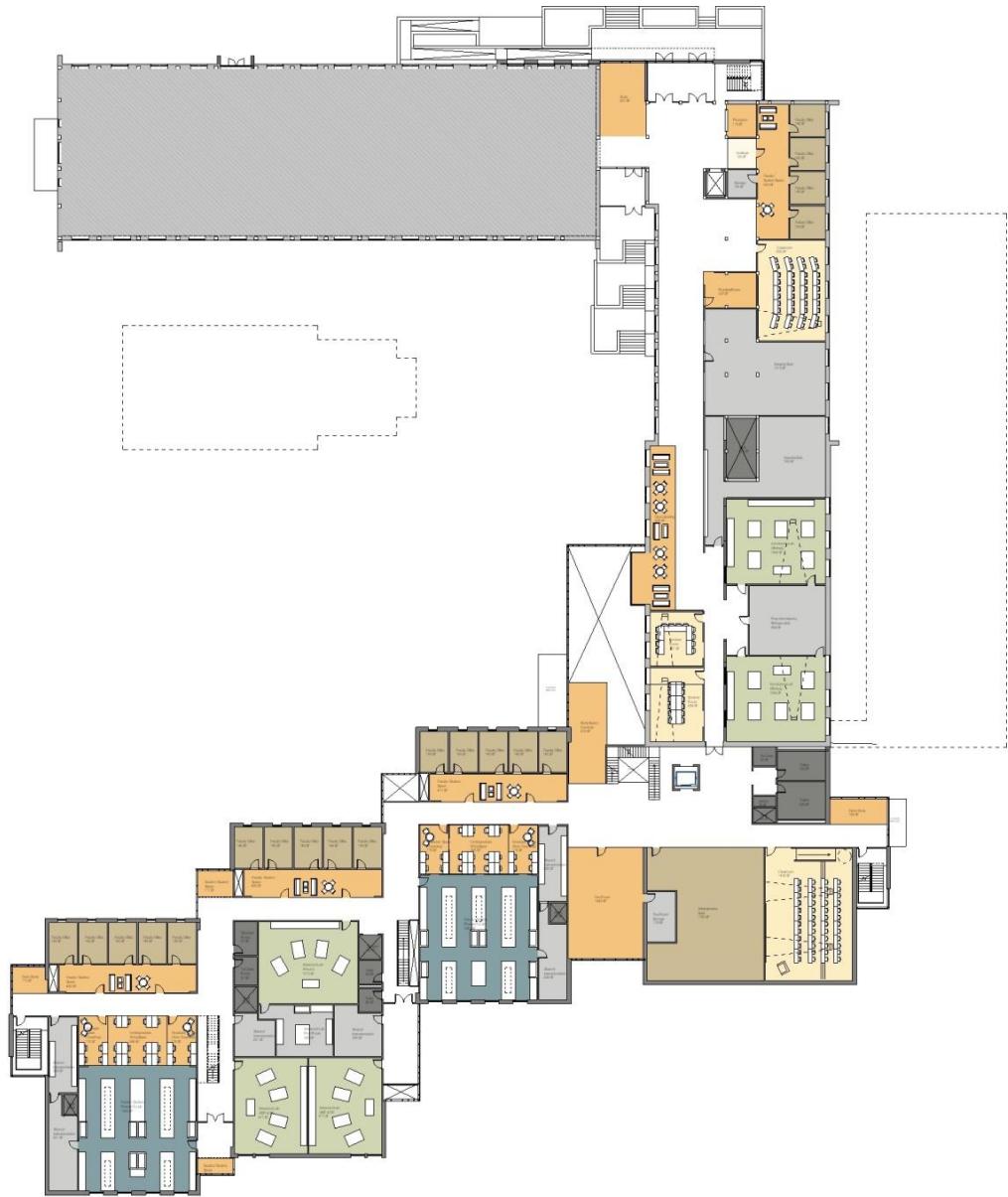




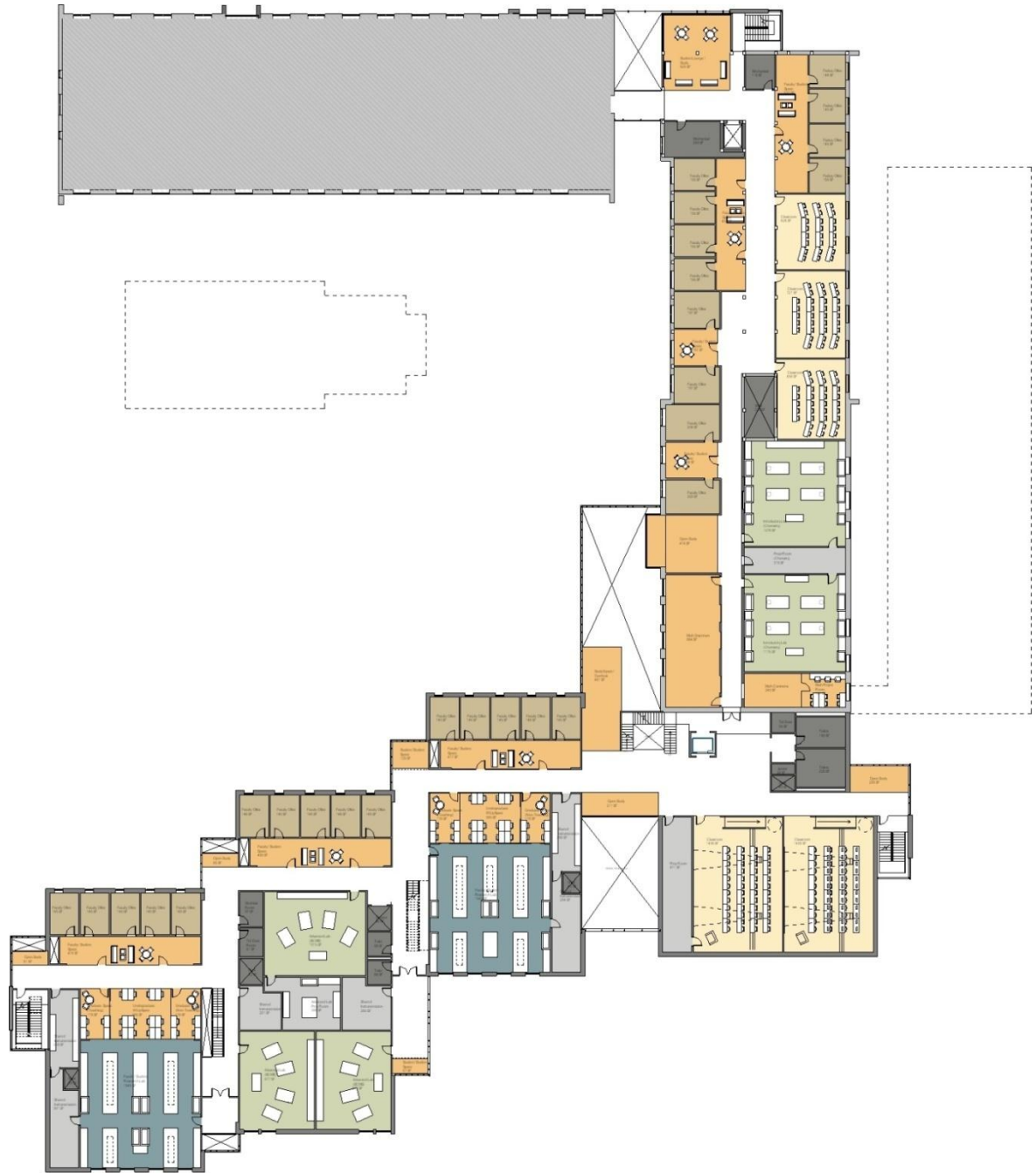
# First Floor



# Second Floor

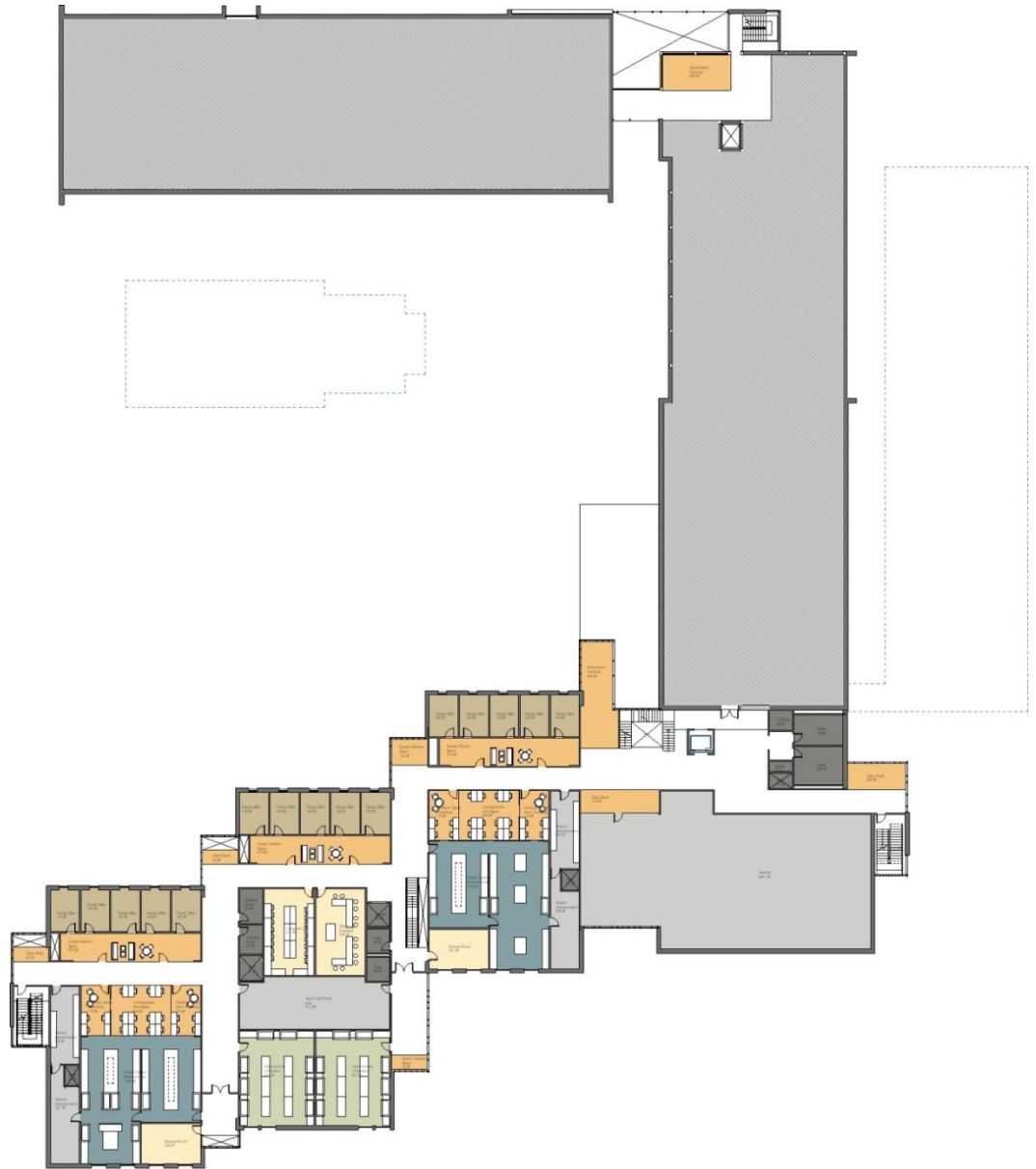


# Third Floor





# Fourth Floor



Architectural floor plan of the 1st floor of a building. The plan shows various rooms including a Reception area (811 SF), a Headmaster's office (104 SF), a Mechanical room (112 SF), and a large open area (100 SF). The plan also includes a staircase, a rest area, and a large open area. The building is surrounded by a parking lot and a road.

# Madison Ave. Elevation





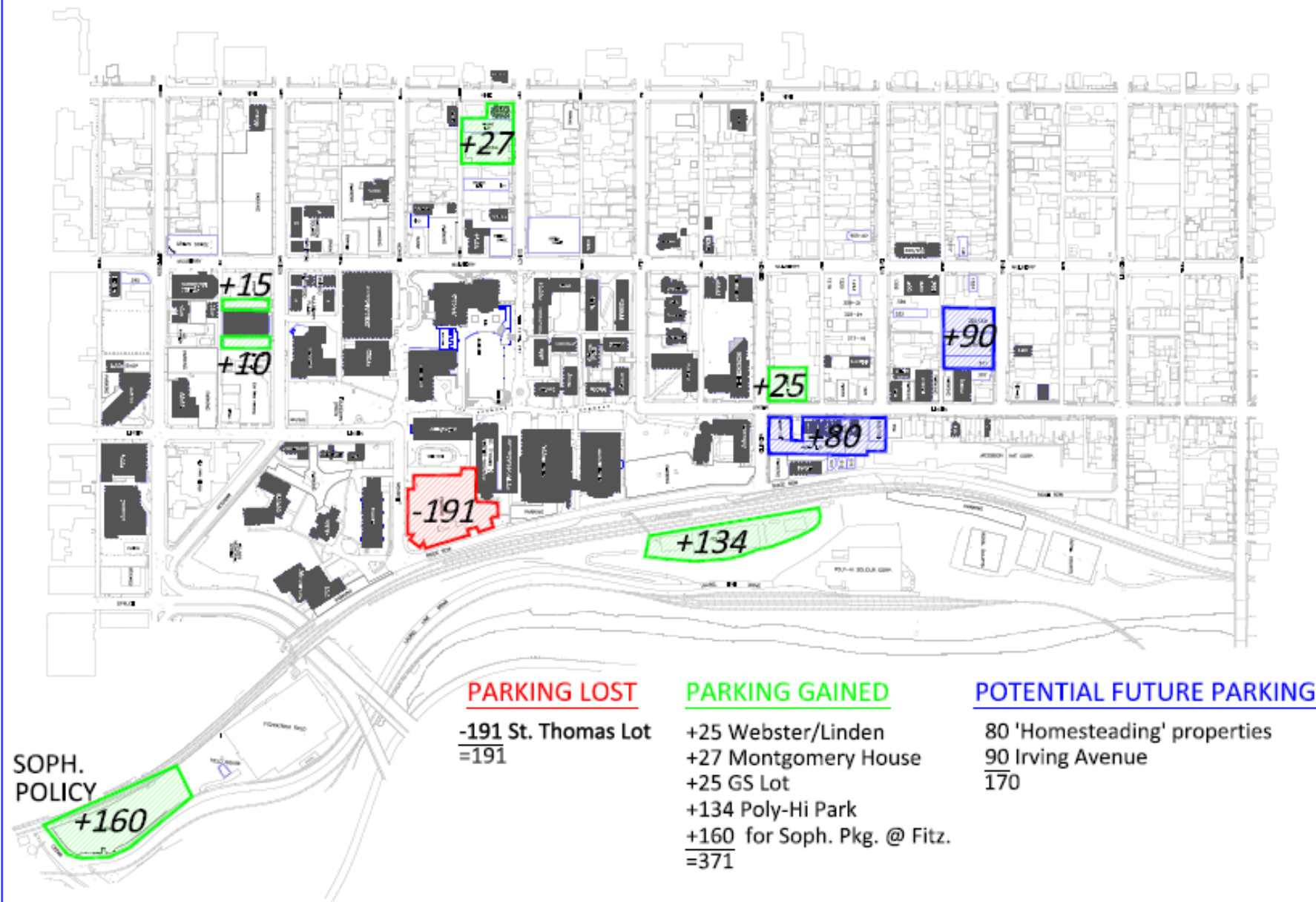












THE UNIVERSITY OF  
**SCRANTON**  
A JESUIT UNIVERSITY

The University of Scranton  
800 Linden Street  
Scranton, PA 18510

Campus Map - June, 2009

University Facilities/Holdings  
Non-University Properties



Drawn: Kranick  
Date: 10 June, 2009  
Scale: None  
Dwg. Name: VP1  
Physical Plant Department  
941-6267

