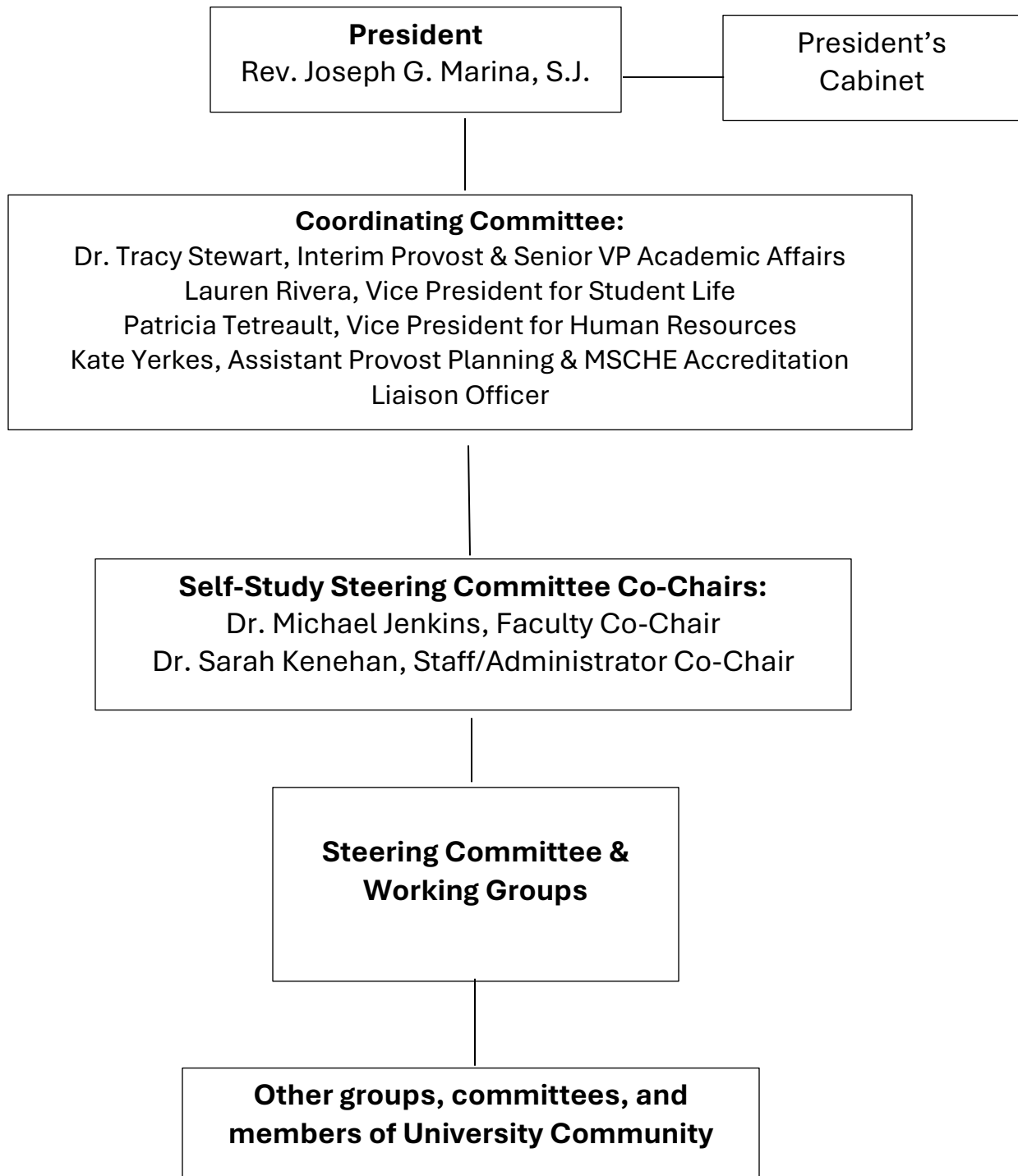


**University of Scranton**  
**2025-2028 Middle States Self-Study**  
**Organizational Structure**



## Description of Self-Study Groups:

- The **Coordinating Committee** is comprised of the Provost and Senior Vice President for Academic Affairs; the Vice President for Student Life; the Vice President for Human Resources; and the Assistant Provost for Planning & Institutional Effectiveness & Middle States Accreditation Liaison Officer (ALO). The Coordinating Committee is charged by the President to support the Steering Committee's co-chairs and the study's general progress; ensure the resources necessary for the study are in place; and help to triage issues and needs that may arise during the process. The Provost/SVP for Academic Affairs and Vice Presidents for Student Life and Human Resources are all members of the President's Cabinet. These individuals also serve as liaisons for the three representative constituent Senates as part of our governance structure.

The ALO is the project lead responsible for overall study operations, providing direct support to the Steering Committee co-chairs. The ALO coordinates MSCHE and peer review visits and the submission of the self-study report and its components. The ALO is the primary contact with MSCHE for all study-related communications.

- **Steering Committee:** The Steering Committee Co-Chairs lead the Steering Committee as it navigates the various study milestones, leading the research, discussions, collation of campus input, and preparation of findings necessary for carrying out the Design for Self-Study and the production of the Self-Study Report. The Steering Committee is chaired by Dr. Michael Jenkins, Professor and Chair, Criminal Justice and Sociology, and Dr. Sarah Kenehan, Executive Director of the Slattery Center for Ignatian Humanities. The co-chairs present the final self-study report to the Presidents' Cabinet for final review and approval. Steering Committee Members include representatives from the faculty, staff, administration, and student body. Some members are selected based on their knowledge of certain academic or administrative areas, others based on specific roles in which they serve. All are expected to engage in healthy dialogue within the Committee, promote that dialogue within the Working Groups they lead, and with others across the University. Members of institutional research and other staff may be asked to serve in supporting roles for the Steering Committee. Given the close relationship between the Self-Study and the University's AJCU Mission Priority Examen (MPE), a member of the MPE committee with self-study experience will be identified as an MPE Liaison to the Self-Study Steering Committee to support alignment and connections.
- **Working Groups:** Each member of the Steering Committee serves as a chair or co-chair of one of seven Working Groups, each aligned with one of the *Standards*, and an eighth working group tasked with the compliance reporting aspects of the process. These Working Groups are comprised of members of the faculty, staff, administration, and student body. Working Groups gather, examine, and summarize information and documentation related to their respective standard, forming responses to the research questions outlined in the Design for Self-Study. Working Group leaders regularly report to the Steering Committee, detailing their progress, sharing key findings and questions, and seeking clarification where needed. Each Working Group will produce a final report on their standard, which will be used by the Steering Committee co-chairs to draft the Self-Study Report. An eighth Working Group is charged with the completion of the Institutional Compliance Report, a separate report that must be prepared as part of the self-study process. Historically this report has been prepared by the University's longstanding HEOA Workgroup, chaired by the Assistant Provost Planning & IE, which has ongoing responsibility for reviewing and assuring compliance with the various accreditation-relevant regulations included within this report. This same approach will be utilized for the 2025-2028 self-study.