

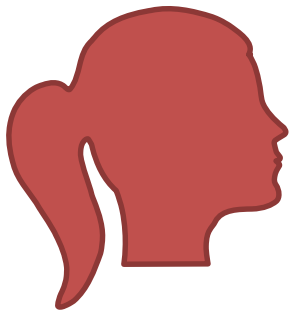


Selected Indirect Measures¹ Institutional Learning Outcome (ILO) 2

ILO 2

Exhibit broad knowledge of the human condition, understanding the world in its physical and natural aspects, as well as the philosophical and theological basis for modern thought, faith, and belief.

Exhibit broad knowledge of the human condition



74%

Rated themselves as above average in ability to understand others.

Understanding the world in its physical and natural aspects

39%

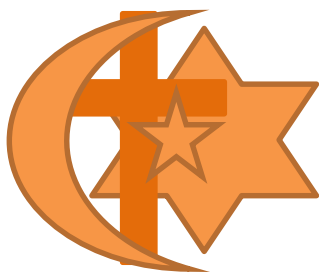
Reported that general knowledge was a major strength.

49%

Frequently applied concepts from courses to everyday life.



Philosophical & theological basis for modern thought, faith, and belief



18%

Frequently attended religious services.

28%

Prayed or meditated at least 1 hour a week.

16%

Frequently discussed religion.

¹The selected indirect measures reflect survey questions from the 2014 College Senior Survey that map to the University's Institutional Learning Outcomes. The response rate in 2014 was 31%.