

Table 6. Mean Acceptance Rates in Graduate Psychology Programs (% of students who apply and are accepted to a particular program)

Area Masters Doctoral

Clinical Psychology 37% (table)

Clinical Neuropsychology --- 26%^a

Cognitive Psychology 40% 16%

Community Psychology 61% 24%

Counseling Psychology 63% 30%

Developmental Psychology 44% 20%

Educational Psychology 57%^a 48%

Experimental Psychology 39% 15%

Health Psychology 41% 16%

Industrial/Organizational Psychology 52% 27%

Neuroscience 32%^a 15%

Quantitative Psychology 78% 36%

School Psychology 34% 31%

Social & Personality Psychology 39% 12%

Sources: American Psychological Association. (2010). *Graduate Applications, Acceptances, Enrollments, and Degrees Awarded to Master's- and Doctoral-Level Students in U.S. and Canadian Graduate Departments of Psychology: 2008-2009*.

^aData taken from Norcross, J. C., Kohout, J. L., & Wicherski, M. (2005). Graduate study in psychology: 1971 to 2004. *American Psychologist*, 60, 959-975.

Table 7. Mean Acceptance Rates and Financial Assistance by Type of APA-Accredited Program in Clinical Psychology

Free- University- Practice- Equal- Research-
standing based oriented emphasis oriented
PsyD PsyD PhD PhD PhD

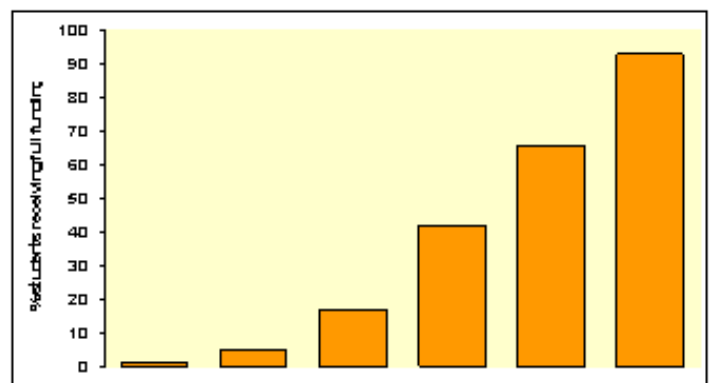
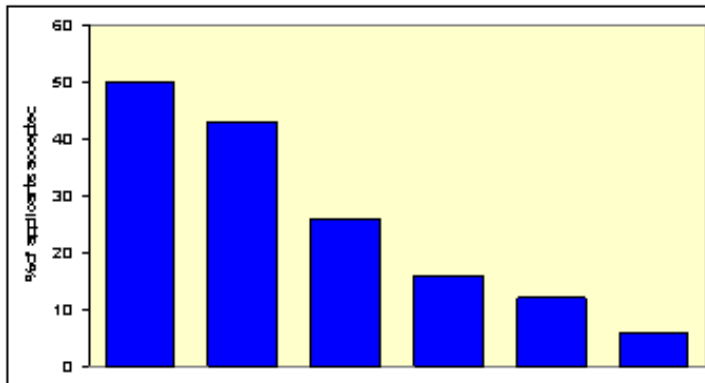
% of applicants accepted 50% 35% 16% 14% 7%

% of incoming students given

tuition waiver only 0% 1% 7% 3% 0%
 assistantship only 13% 22% 57% 20% 8%
 waiver and assistantship 1% 12% 42% 54% 89%

Source: Norcross, J. C., Ellis, J. L., & Sayette, M. A. (2010). Getting in and getting money: A comparative analysis of admission standards, acceptance rates, and financial assistance across the research-practice continuum in clinical psychology programs. *Training and Education in Professional Psychology, 4*, 99-104.

Getting In: Average Acceptance Rates Getting Money: Average % Receiving Full Support



Free Univ Univ Practice- Equal Reseach- Free Univ Univ Practice- Equal Reseach-
 standing Profes Dept oriented emphasis oriented standing Profes Dept oriented emphasis oriented
 PsyD PsyD PsyD PhD PhD PhD PsyD PsyD PsyD PhD PhD PhD

Free- University University
Practice- Equal Research-
standing Professional
Department oriented emphasis
oriented
PsyD School PsyD PsyD PhD
PhD PhD