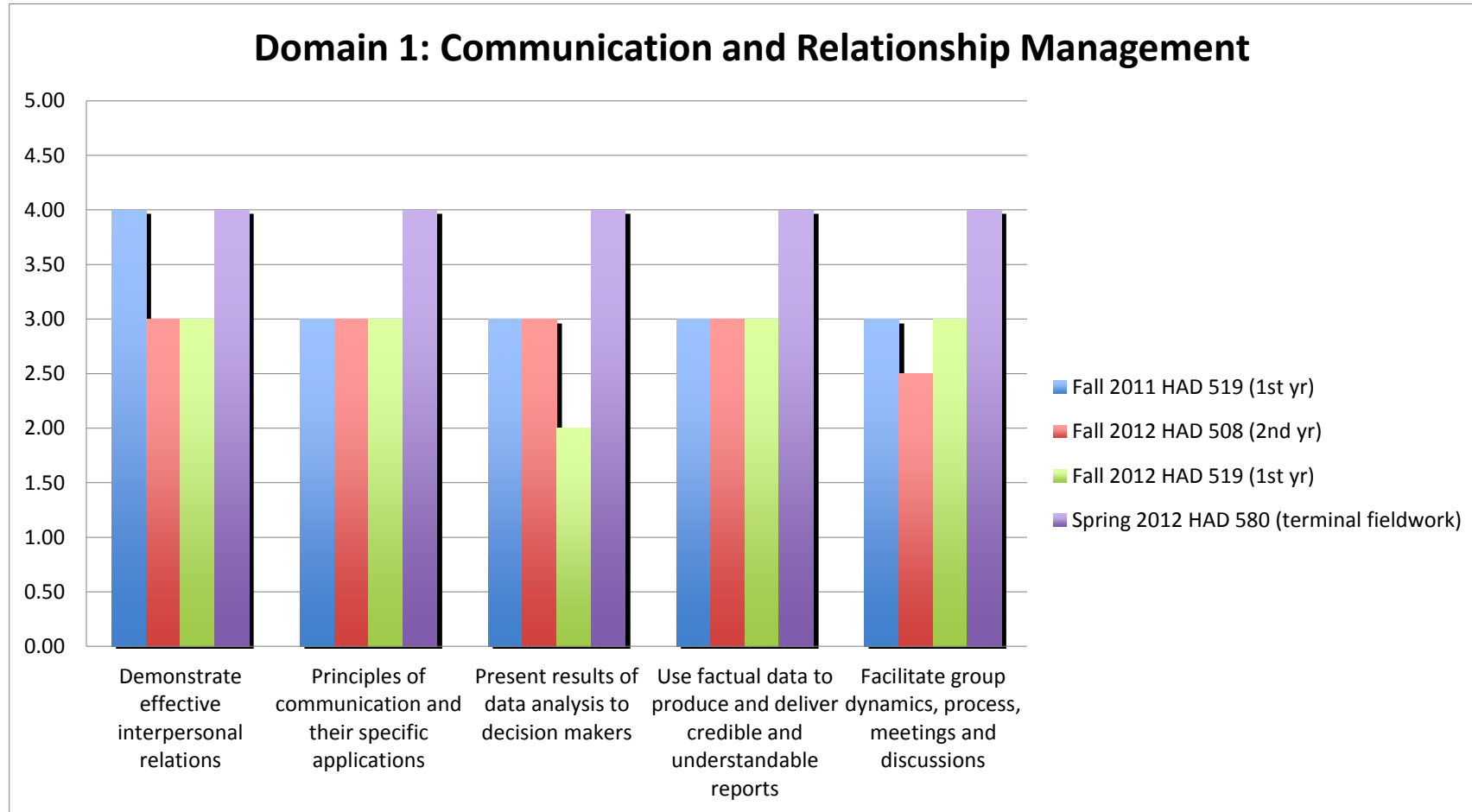
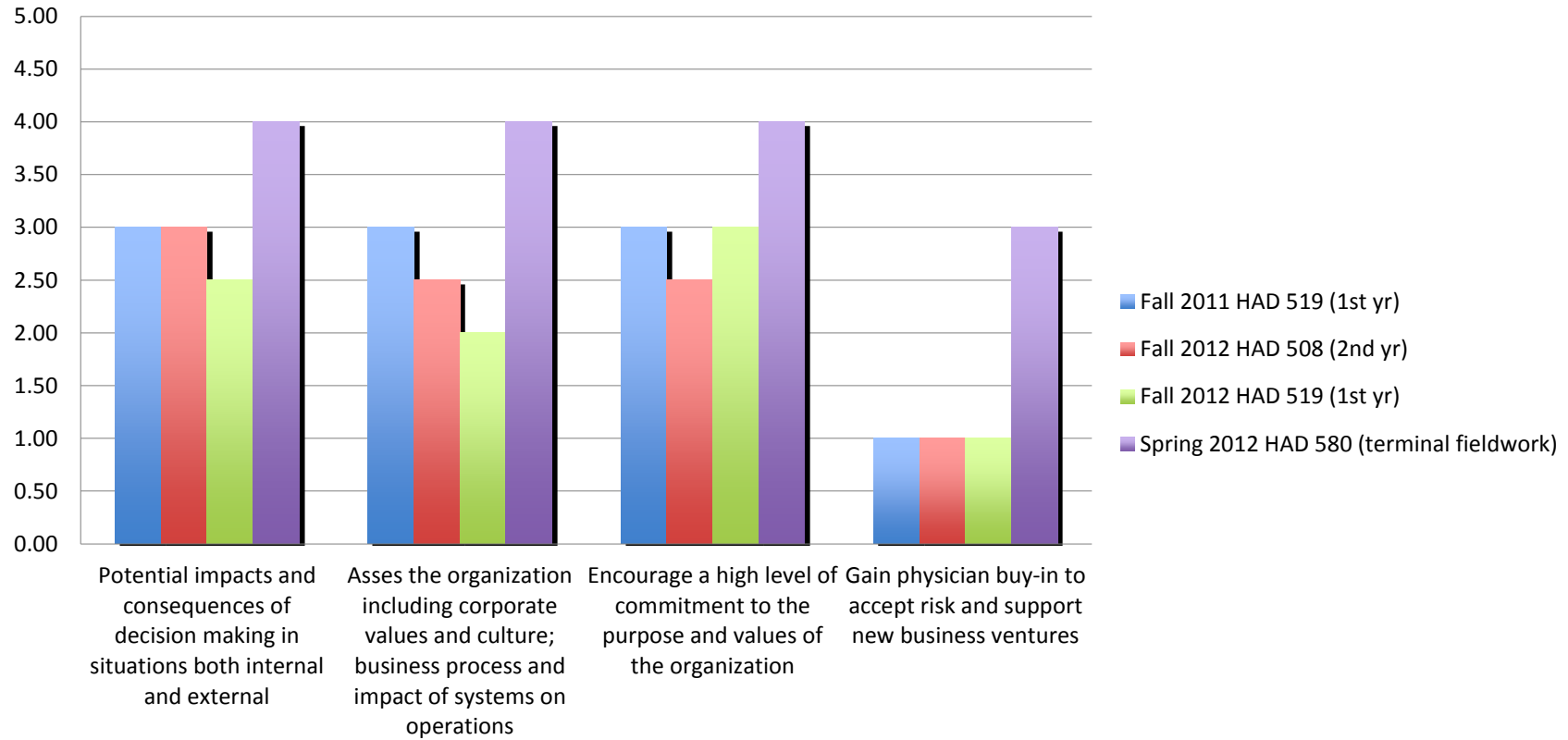


## ACHE Competency Assessment Median Data

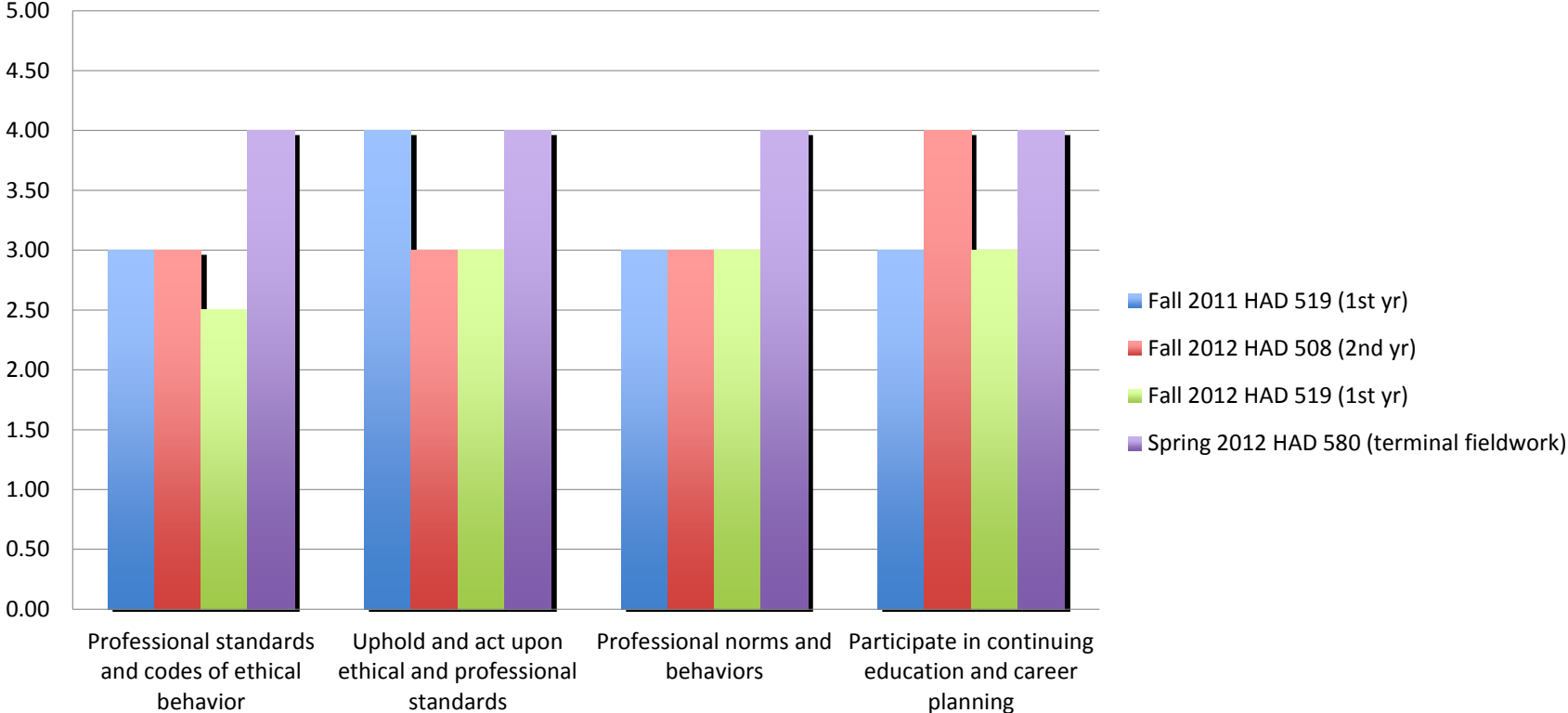
Scores on 1-5 Scale Ranging from "Novice" (1) to "Moderate" to "Expert" (5)



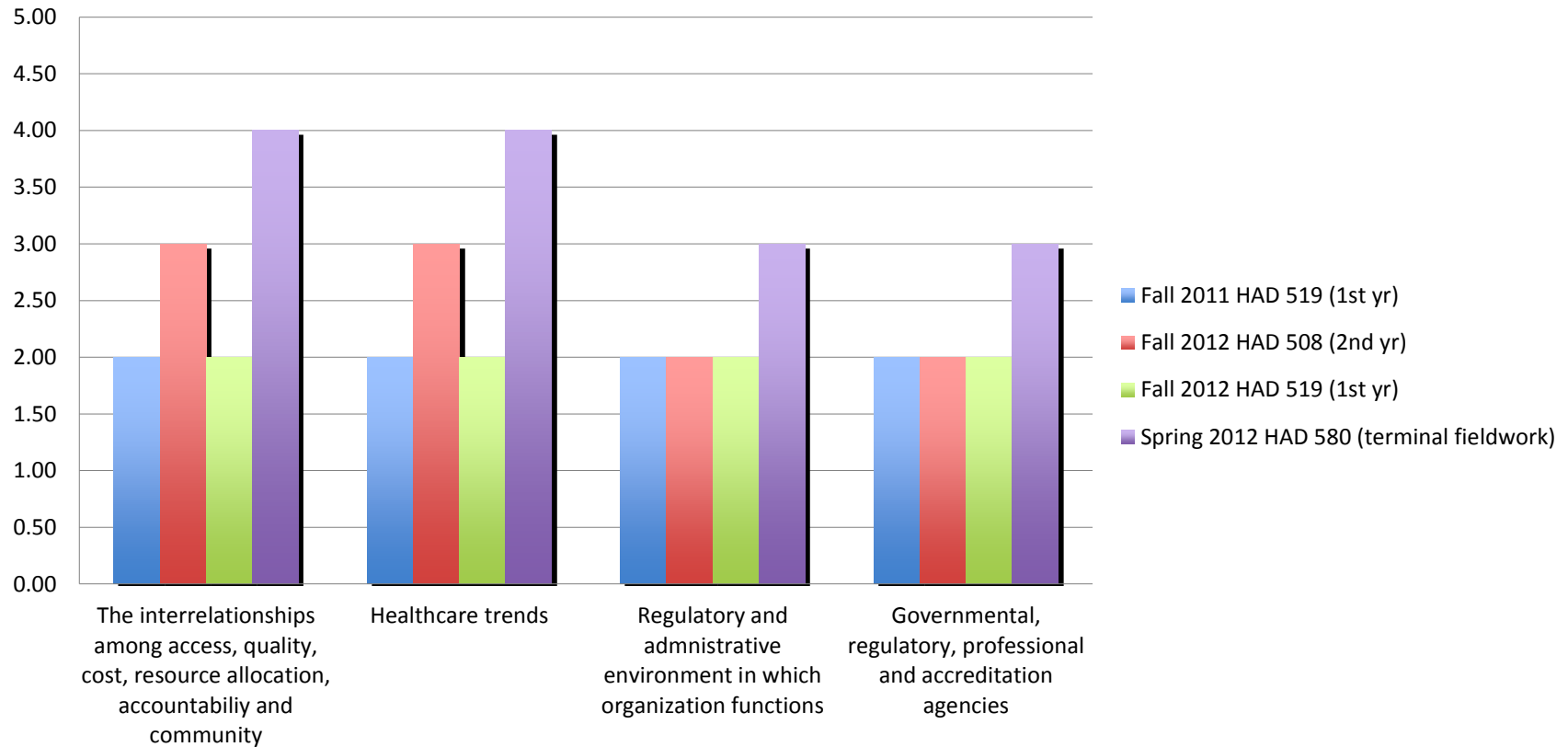
## Domain 2: Leadership



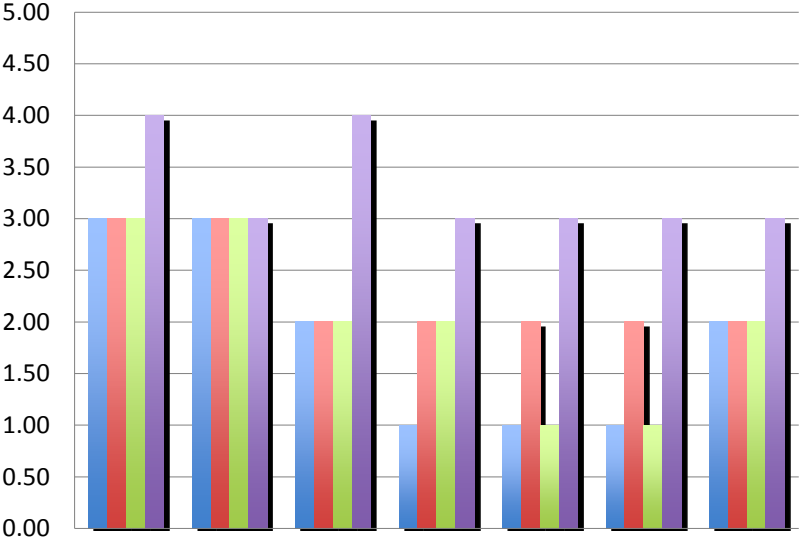
### Domain 3: Professionalism



## Domain 4: Knowledge of the Healthcare Environment



## Domain 5: Business Skills and Knowledge



- Fall 2011 HAD 519 (1st yr)
- Fall 2012 HAD 508 (2nd yr)
- Fall 2012 HAD 519 (1st yr)

Ability to integrate information from various sources to make...

Demonstrate critical thinknig and analysis

Project management

Financial management and analysis principles

Reimbursement principles, ramifications and techniques...

Principles of operating, project and capital budgeting

Data collection, measurement and analysis tools and...









]

