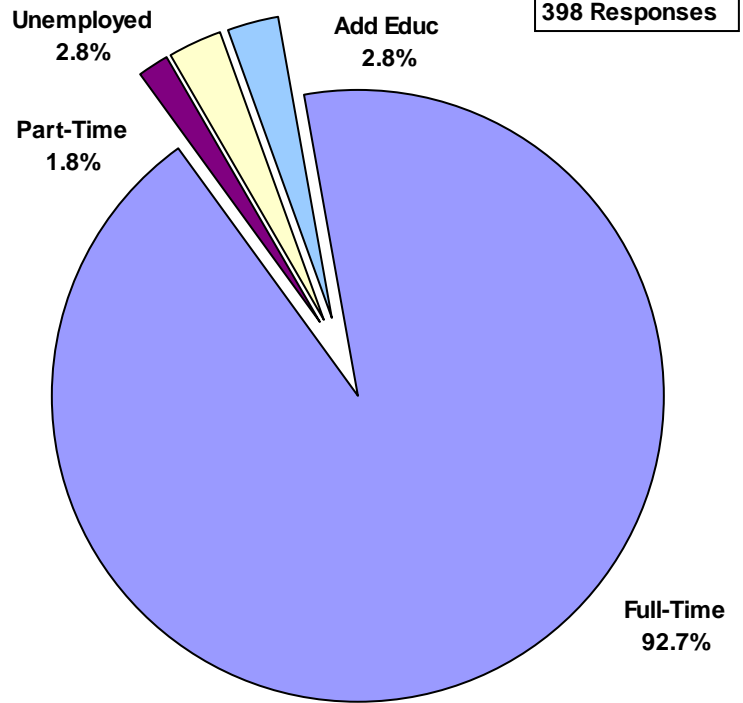


# POST-GRADUATION ACTIVITIES GRADUATE SCHOOL CLASS OF 2010

The Career Services Office conducts an annual follow-up survey of The University of Scranton graduates to determine the post-graduation status of this population. This four-page publication serves as an executive summary of the survey findings. Actual placements with employers and graduate or professional schools can be identified in a full report available in the Career Services Office.

## Post Graduation Activities



### HIGHLIGHTS OF THE 2010 REPORT

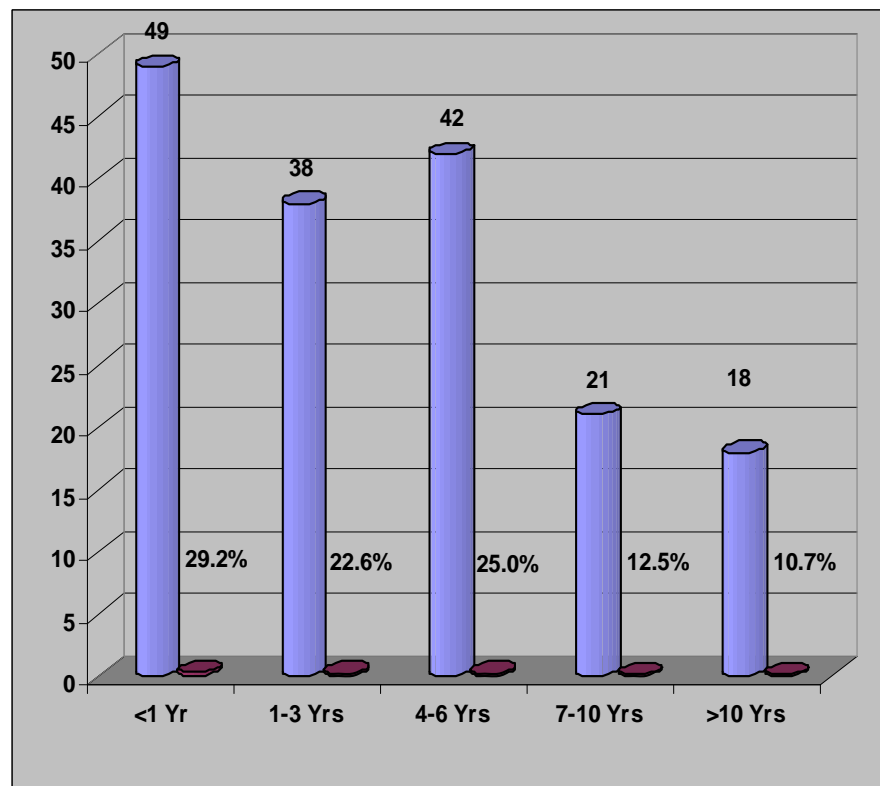
- 636 students completed graduate degree requirements in 2010; 678 finished degrees in 2009.
- 62.6% (N=398) of the Class of 2010 provided placement information.
- 97.2% of the respondents were either employed or pursuing additional education full-time.
- 92.7% of the respondents were employed full-time
- The average salary reported for 2010 graduates was \$55,862. (224 salaries reported)
- 70% of the graduates employed full-time were working in Pennsylvania, New Jersey, and New York.
- 2.8% (N= 7) of the respondents were pursuing additional education full-time.
- The unemployment rate for the Class of 2010 was 2.8%.

### Length of Time in Present Job

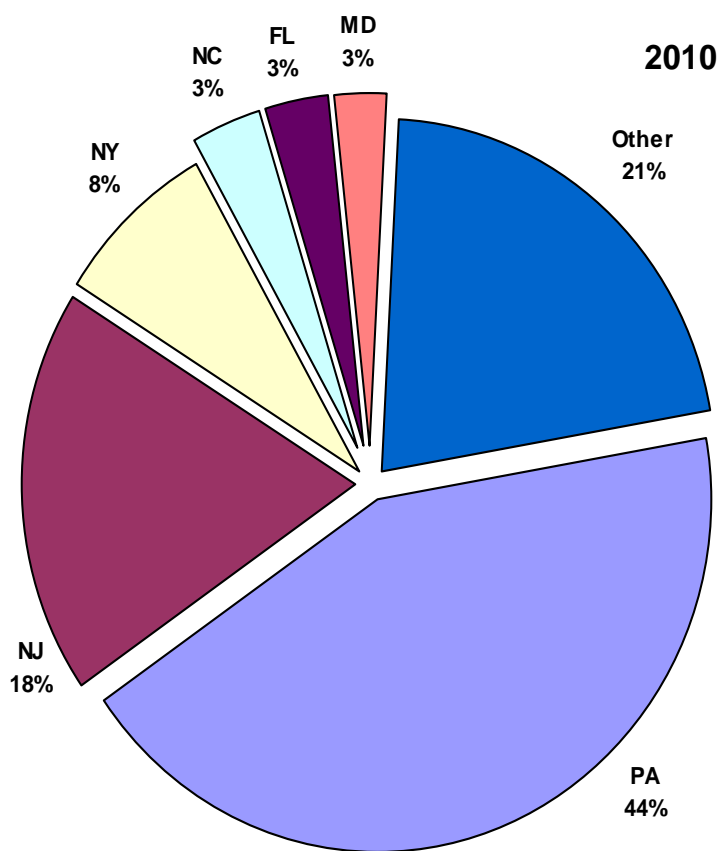
Approximately 29.2% of the graduates employed full-time (that provided information) indicated they were working in their job for less than 1 year. Of these graduates, 26.5% of these graduates completed the Educational Administration or Curriculum and Instruction program; 18.4% were Physical or Occupational Therapists.

A significant increase continues to be seen in those reporting employment with more years of experience as a result of the new online degree programs offered in the Education area.

### Length of Time in Present Job



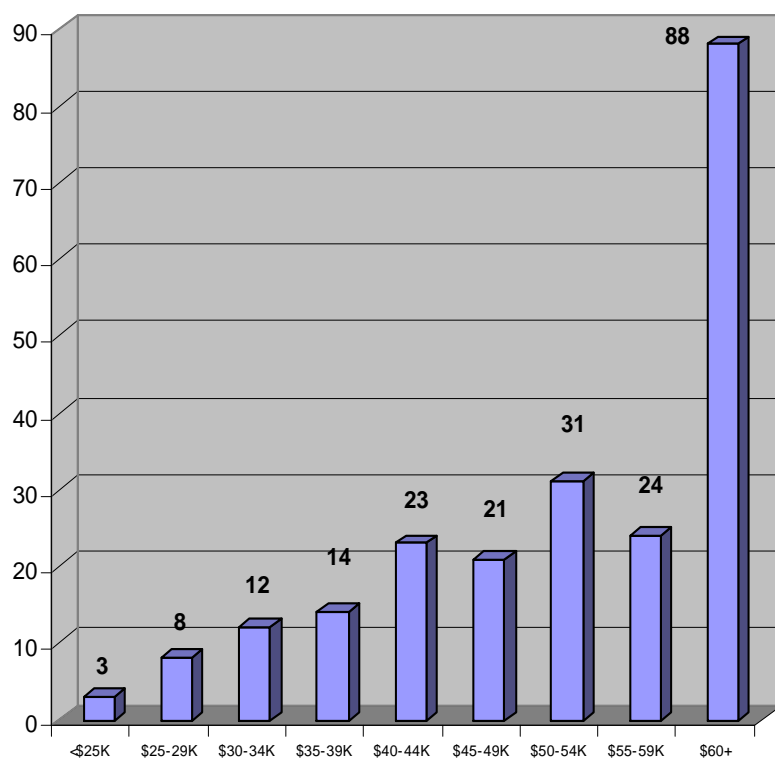
## Geographical Placements by State



85 Graduates employed in Northeastern PA

## Salary Information

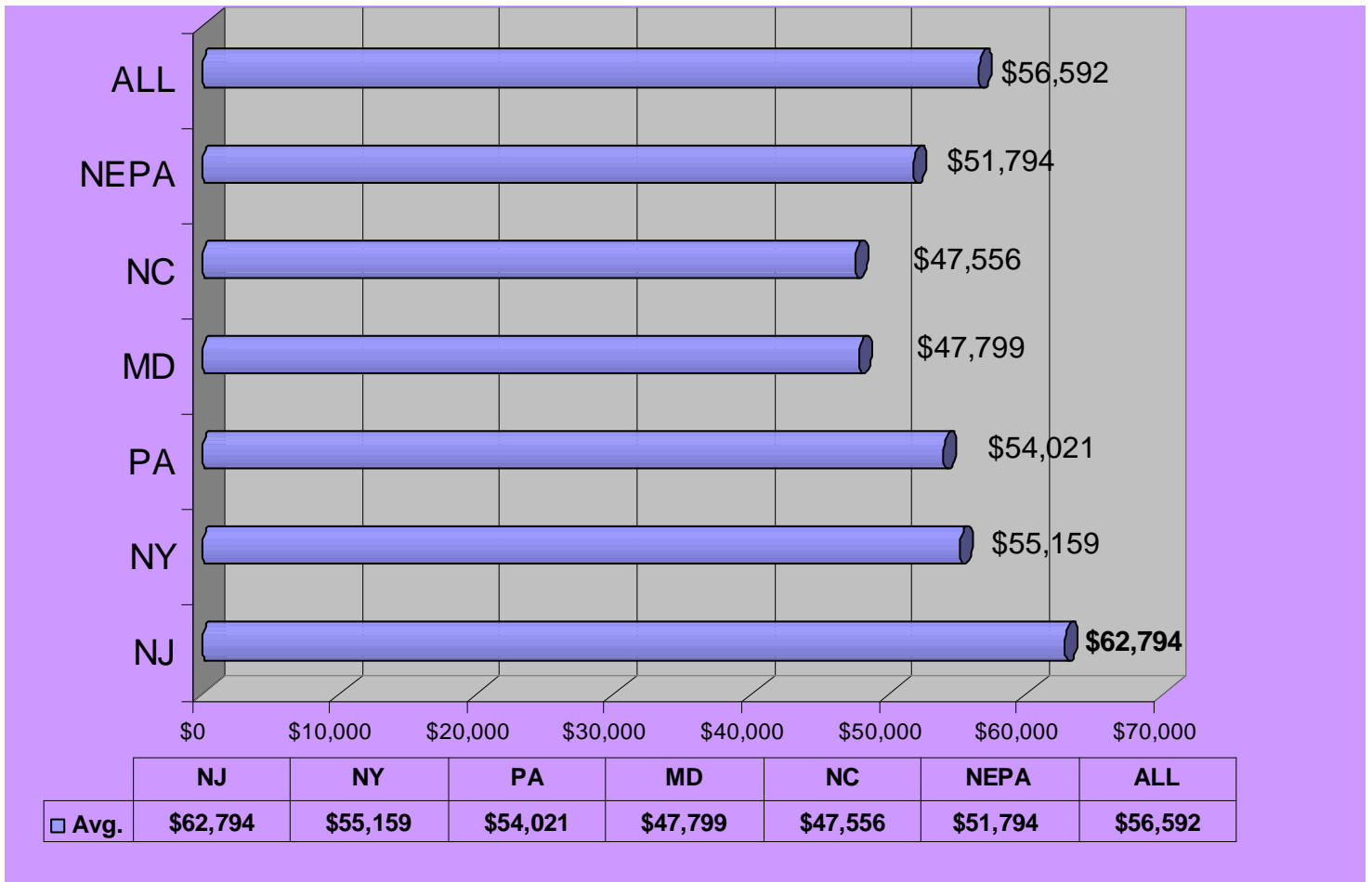
Approximately 61% of the graduates employed full-time provided salary information. The average salary for 2010 graduates was \$56,592. The graph below indicates the number of salaries reported by 5K ranges.



## Average Salaries by Program - Class of 2010

MAJOR	Avg.	#	MAJOR	Avg.	#
Accounting	\$42,883	6	History	\$25,500	2
Adult Health Nursing	\$63,667	3	Human Resource Administration	\$74,900	1
Biochemistry	\$60,221	5	International Business	\$70,000	1
Chemistry	\$42,000	1	Marketing	\$35,750	2
Community Counseling	\$36,333	3	Nurse Anesthesia	\$145,833	6
Curriculum & Instruction	\$50,512	67	Occupational Therapy	\$61,185	11
Early Childhood Education	\$26,000	1	Physical Therapy	\$67,361	17
Educational Administration	\$58,840	56	Reading Education	\$51,533	3
Elementary Education	\$51,000	1	Rehabilitation Counseling	\$35,800	5
Finance	\$48,793	3	School Counseling	\$40,049	8
General	\$49,125	4	Secondary Education	\$43,749	4
Health Administration	\$53,680	5	Software Engineering	\$68,000	2
Health Care Management	\$118,500	2	Special Education	\$46,500	2
			Theology	\$42,800	2

## *Average Salaries Reported by State*



## *Post Graduation Status Trends (2000 - 2010)*



## The University of Scranton Graduate School Class of 2010 - Status By Program

MAJOR	# Grads	# Resp	% Resp	Post-Graduation			
				Add Educ	Full-Time	Part-Time	Unemployed
Accounting	9	7	78%	0	6	0	1
Adult Health Nursing	5	4	80%	0	4	0	0
Biochemistry	13	8	62%	1	6	0	1
Chemistry	3	3	100%	1	2	0	0
Clinical Chemistry	4	3	75%	1	2	0	0
Community Counseling	16	7	44%	2	4	1	0
Curriculum & Instruction	187	118	63%	1	110	2	5
Early Childhood Education	1	1	100%	0	1	0	0
Educational Administration	175	109	62%	0	106	2	1
Elementary Education	5	4	80%	1	2	0	1
English As Second Language	1	0	0%	0	0	0	0
Finance—MBA	8	3	38%	0	3	0	0
General MBA	11	6	55%	2	4	0	0
Health Administration	20	9	45%	1	8	0	0
Health Care Management	4	4	100%	0	4	0	0
History	5	3	60%	0	3	0	0
Human Resource Administration	12	4	33%	0	3	0	1
International Business—MBA	4	2	50%	0	2	0	0
Marketing—MBA	4	2	50%	0	2	0	0
Nurse Anesthesia	17	12	71%	0	12	0	0
Occupational Therapy	26	15	58%	0	15	0	0
Operations Management—MBA	2	0	0%	0	0	0	0
Physical Therapy	37	30	81%	0	29	1	0
Reading Education	5	4	80%	0	4	0	0
Rehabilitation Counseling	16	9	56%	1	8	0	0
School Counseling	25	15	60%	0	14	0	1
Secondary Education	11	8	73%	0	7	1	0
Software Engineering	3	2	67%	0	2	0	0
Special Education	4	3	75%	0	3	0	0
Theology	3	3	100%	0	3	0	0
<b>Totals</b>	<b>636</b>	<b>398</b>	<b>63%</b>	<b>11</b>	<b>369</b>	<b>7</b>	<b>11</b>
				<b>3%</b>	<b>93%</b>	<b>2%</b>	<b>3%</b>