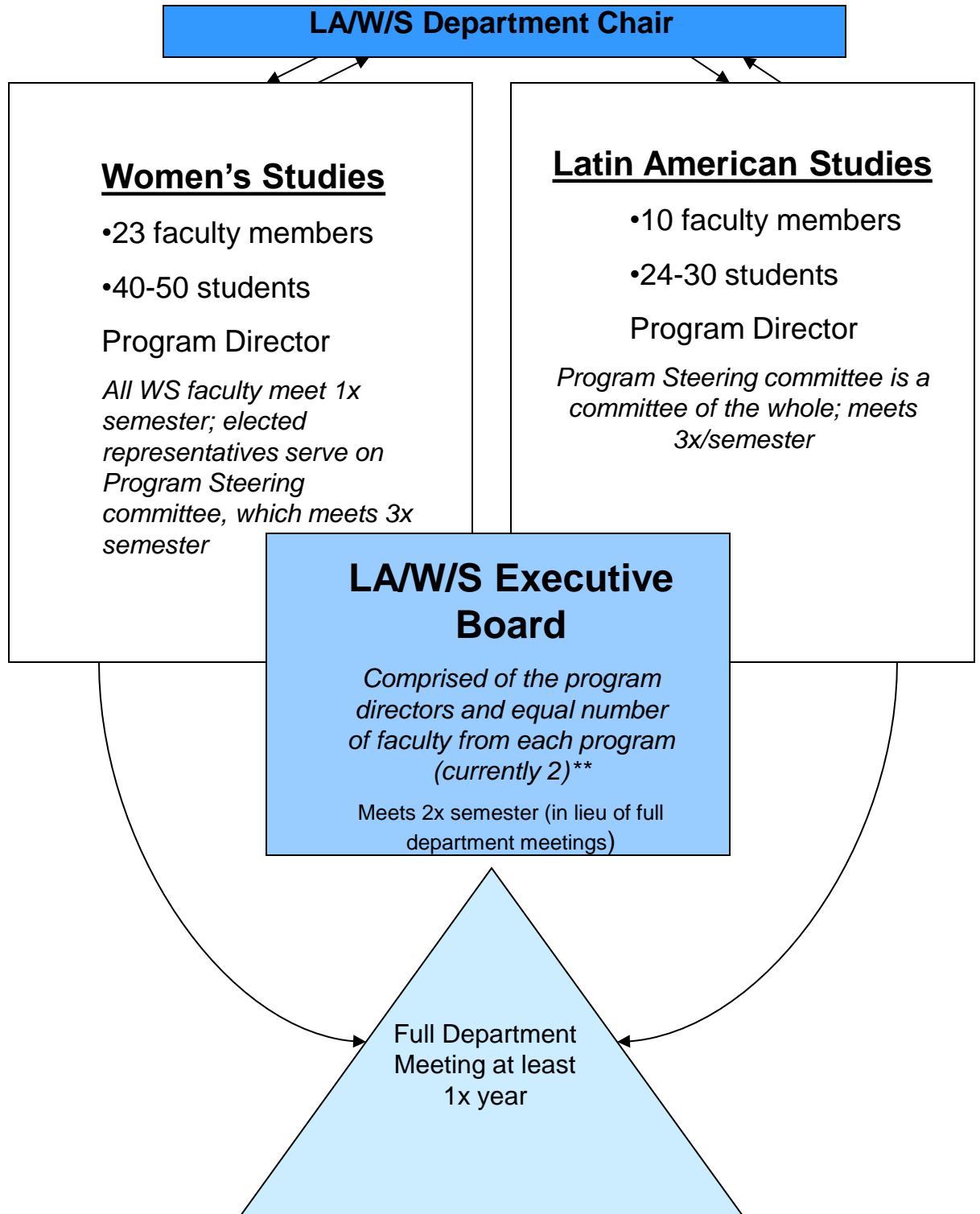


LA/W/S Operating Model



*Program Directors stand for election; chair rotates between WS and LAS every 3 years, assuming program director is able and willing to serve. Only program directors are eligible to run for department chair.

**LA/W/S EC faculty board members are elected each year by the respective program steering committees affiliated in both programs may only represent 1 on the Executive Board and only have 1 vote in department meetings